

REPORT

November 2003

Bibliometric Analysis of Research on Mental Health in the Workplace in Canada, 1991-2002

Éric Archambault*, Grégoire Côté*,
and Yves Gingras ‡

* Science-Metrix and ‡ CIRST-OST

Prepared for the
Institute of Neurosciences, Mental Health & Addiction
and the Institute of Population & Public Health
Canadian Institutes of Health Research

Address: Centre interuniversitaire de recherche sur la science et la technologie
Observatoire des sciences et des technologies
Université du Québec à Montréal
Pavillon Thérèse-Casgrain, 3^e étage
455, boul. René-Lévesque Est, Bureau W-3040
Montréal (Québec)
Canada H2L 4Y2

Phone: (514) 987-4018

Fax: (514) 987-7726

Email: cirst@uqam.ca

Internet: www.cirst.uqam.ca – www.ost.uqam.ca

Science-Metrix

Address: Science-Metrix
4572, avenue de Lorimier
Montréal (Québec)
Canada H2H 2B5

Phone: (514) 495-6505

Fax: (514) 495-6523

Email: info@science-metrix.com

Internet: www.science-metrix.com



Study Highlights

- This study uses the Medline biomedical papers database to measure scientific production on mental health in the workplace (MHWP) during the 1991-2002 period at the world, Canadian, provincial, urban, institutional and researcher levels.
- Although mental illness in the workplace is very costly in economic terms, research on the field is still marginal at the world and Canadian levels – only 0.2 % of biomedical papers address the issue.
- Despite this low level of scientific output, output has nonetheless doubled and tripled during the last twelve years at the world and Canadian levels respectively.
- At the provincial level, Ontario, Quebec, British Columbia and Alberta are leading in terms of the absolute number of papers. Ontario is the clearest leader, however, since it has both a large output and a high production per capita in the field. It also specializes in it.
- Although not leading in absolute terms, Nova Scotia and Manitoba are important players considering their size.
- Toronto and Montreal are the largest producers of papers on MHWP at the urban level.
- The most important institutions in terms of papers on MHWP are McMaster University, Université de Montréal, University of Toronto, University of British Columbia and University of Western Ontario.
- McMaster University, Université Laval and York University are the universities with the largest number of active researchers in MHWP.

Contents

Study Highlights	i
Contents	ii
Figures	iii
Tables	iii
Methods	iv
1. Introduction	1
2. Scientific output at the world level	2
3. Scientific output at the provincial level	4
4. Scientific output at the urban and institutional levels	7
5. Scientific output at the researcher level	9
6. Conclusion	11
Annex 1. Number of MHWP papers by province and by city, 1991-2002	12
Annex 2. Researchers who published at least one paper on MHWP with a Canadian as first author, 1991-2002 .	13
Annex 3. Papers on MHWP with a Canadian as first author, 1991-2002	17

Figures

Figure 1.	Share of papers on MHWP in Canada and in the world per year, 1991-2002	2
Figure 2.	Papers on MHWP in Canada and in the world per year, 1991-2002	3
Figure 3.	Canadian provinces' share of scientific production in MHWP, 1991-2002.....	4
Figure 4.	Papers per million inhabitants per province, 1991-2002.....	5
Figure 5.	Specialization index of Canadian provinces, 1991-2002.	6

Tables

Table 1.	Number of papers in MHWP research by Canadian province, 1991-2002	5
Table 2.	Most productive Canadian cities in MHWP research, 1991-2002.....	7
Table 3.	Most productive Canadian institutions in MHWP research, 1991-2002.....	8
Table 4.	Most productive Canadian researchers in MHWP research, 1991-2002.....	10

Methods

Working in collaboration with experts appointed by the Institute of Neurosciences, Mental Health and Addiction (INMHA) and the Institute of Population and Public Health (IPPH) of the Canadian Institutes for Health Research (CIHR), the OST/Science-Metrix team defined a controlled vocabulary that precisely defined the field of research on mental health in the workplace. This was validated by looking at the percentage of papers from specialist journals that were selected with these keywords. With these keywords, the OST/Science-Metrix team computed statistics from the Medline database, which is produced by the US National Library of Medicine.

This database has been conditioned by Science-Metrix with a view to producing statistics on scientific publications in the biomedical and clinical medicine sector. The construction of the dataset for the scientometric analysis is essentially based on the use of Medical Subject Headings (MeSH) Terms. These constitute a controlled vocabulary used for indexing papers in Medline. This study uses the conjugation of MeSH terms that represent the field of mental health (e.g. "Stress, Psychological") and of MeSH terms associated with the workplace (e.g. "Occupational Diseases") to identify the papers of which a Canadian is first author.

One caveat associated with the use of this database is that only the address of a paper's first author is compiled. This means that the number of Canadian papers obtained here are minimum figures since they do not consider the effect of co-authorship. In addition, because Medline covers the field of biomedical research and clinical medicine, it is possible that some papers from the social science and the humanities are missing. However, the overall comparative and relative statistics should not be affected. Furthermore, the purpose of this study being the mapping of the distribution of Canadian expertise rather than the identification of every researcher, this limitation is not a handicap.

The data collected were used to produce detailed statistics based on the following indicators:

Number of papers - Number of scientific papers written by authors located in a given geographical, geopolitical or organizational entity (e.g. countries, cities or institutions).

Number of papers per capita – This is a relative measure that accounts for the size of the geographic entities being considered.

Index of specialization - This is an indicator of the intensity of research in a given geographic or organizational entity relative to the overall output for a given reference. For example, if the percentage of Ontario's papers (the geographic entity) in the field of mental health and workplace research is greater than the percentage of papers in this field at the Canadian level (the reference), then Ontario is said to be specializing in this field.

For the purpose of the report, relevant indicators have been used for data aggregated by province, by city, by most active institution and by leading researcher.

1. Introduction

This report examines the scientific production of Canadian researchers in the field of mental health in the workplace (MHWP) using scientometric methods and the Medline database. The output of the last twelve years (1991-2002) is studied in Section 1, and in Section 2, Canada's output is compared to that of the world. We will see that Canada has a slightly greater percentage of its papers in the area of mental health in the workplace than the world average.

Section 3 examines the scientific output of the Canadian provinces. Not surprisingly, Ontario is a clear leader, and Quebec is second followed by British Columbia and Alberta. Although the aforementioned provinces lead in absolute terms, Nova Scotia and Manitoba are important in relative terms (papers per capita; specialization index). Section 4 looks at mental health in the workplace research at the urban and institutional levels, while Section 5 provides a list of the most active researchers in the field.

2. Scientific output at the world level

Figure 1 reveals that the percentage of papers on MHWP grows faster in Canada than at the world level. In fact, the proportion of papers on MHWP is nearly 50% greater in Canada than at the world level – more than 0.3% in Canada vs. more than 0.2% at the world level. Although the proportion of Canadian papers on MHWP dropped markedly in 1995 and 1996, there is a clear tendency of more Canadian papers in the biomedical sector being written in MHWP. In fact, the proportion of papers written in this field grew in eight of the twelve years studied. One must note that the yearly variations observed here are not exceptional for a small scientific field, and the field will no doubt show more stability if growth continues.

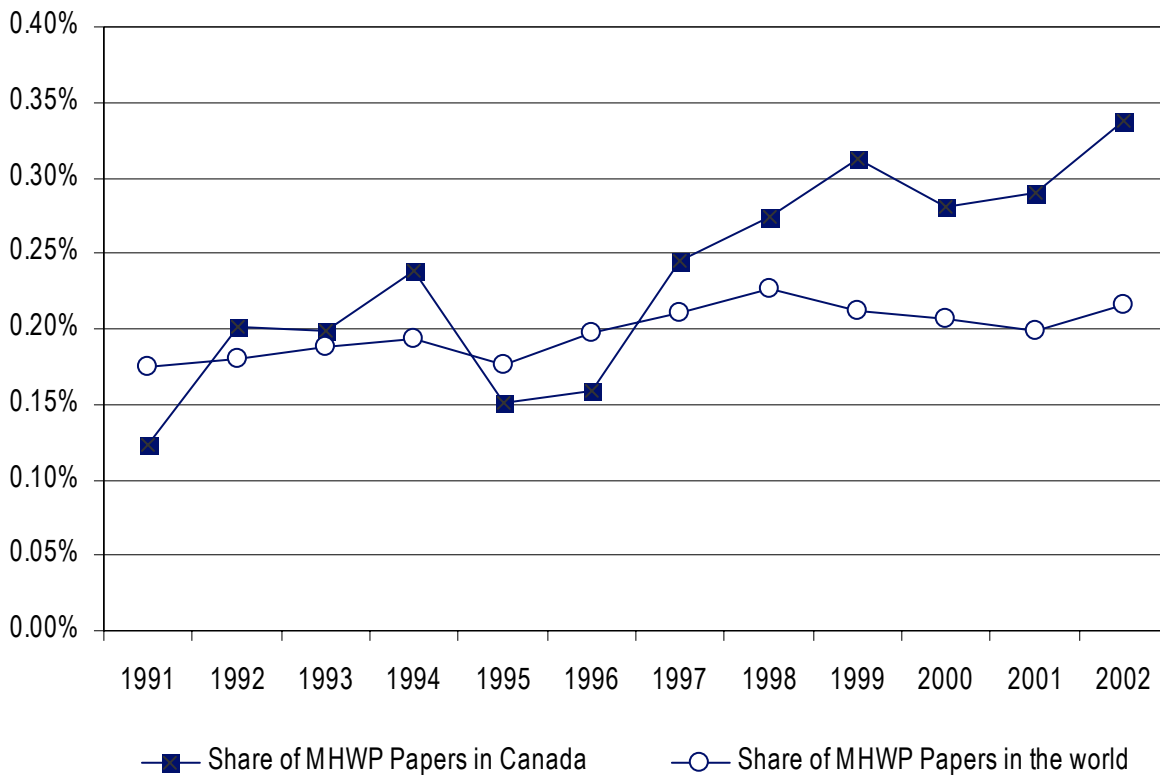


Figure 1. Share of papers on MHWP in Canada and in the world per year, 1991-2002
 Source: Compiled by Science-Metrix from the Medline database.

Figure 2 reveals that between 1991 and 2002 papers in MHWP increased by 75% in absolute terms at the world level, that is, from 535 papers in 1990 to 940 papers in 2002. In Canada, growth was even more important, with production more than trebling from 14 papers in 1991 to 52 in 2002. The share of the total MHWP papers written by Canada more than doubled from 2.6% in 1991 to 5.5% in 2002. On average, Canada was responsible for 4.4% of papers on MHWP, and it authored 3.7% of papers in the biomedical field indexed in Medline. This means that Canada specializes in MHWP (Specialization Index of 1.2). By comparison, Canada produces about 4% of the world scientific literature in natural and engineering sciences.

Although total output is small when considered in relation to the economic costs associated with mental illness in the workplace, the field is clearly rising rapidly at the international level and is growing faster still in Canada.

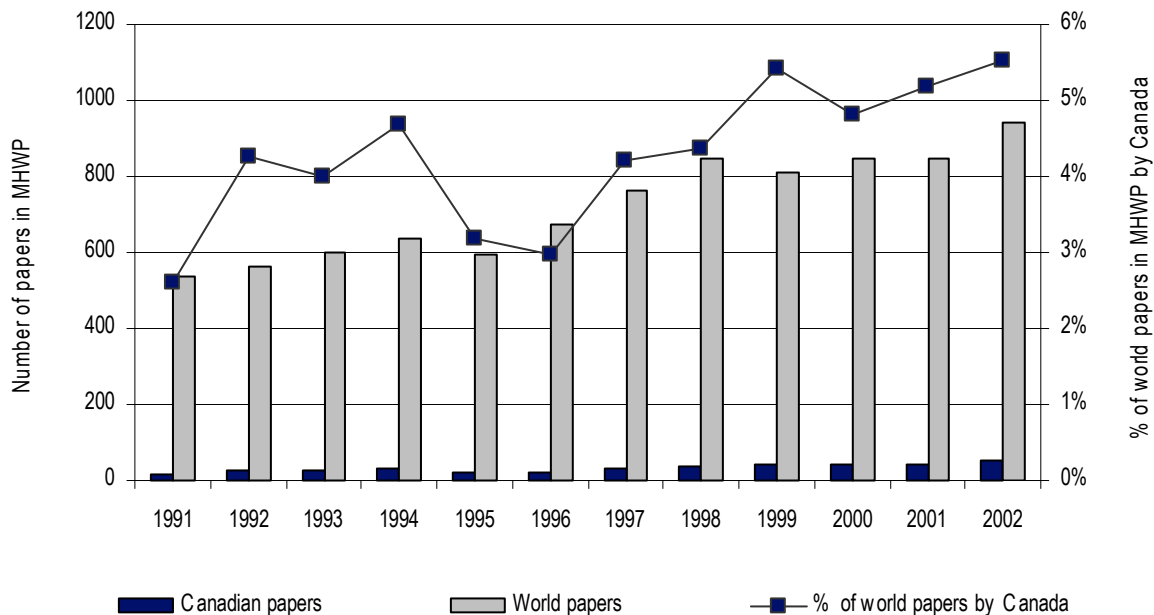
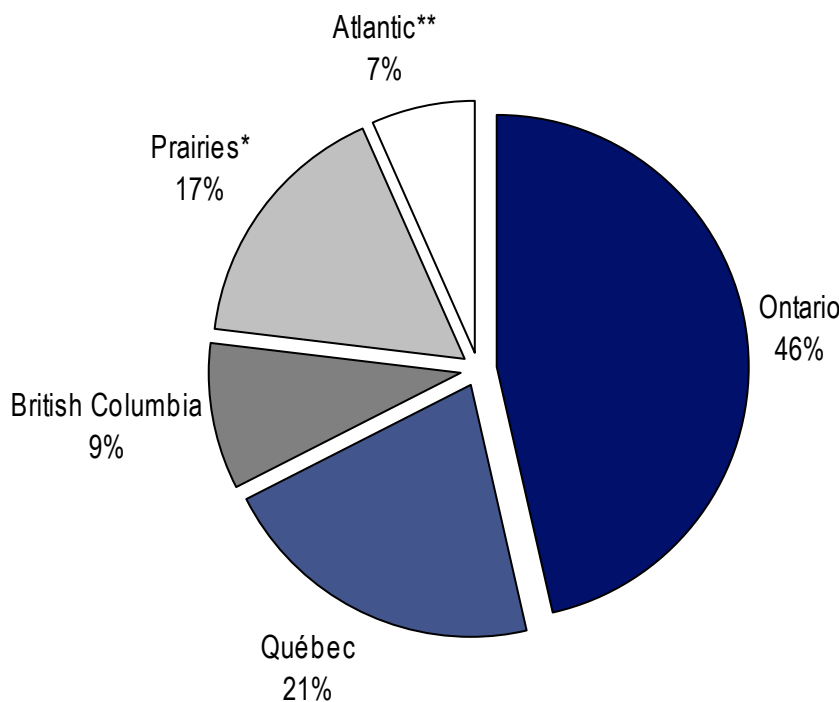


Figure 2. Papers on MHWP in Canada and in the world per year, 1991-2002
 Source: Compiled by Science-Metrix from the Medline database.

3. Scientific output at the provincial level

Within Canada, Ontario has a clear lead over the other provinces in the field of MHWP. The proportion of Canadian output is more than double that of its closest competitor, that is, Quebec (46% of Canadian papers are authored in Ontario versus 21% in Quebec). British Columbia and Alberta are on a par, each with 9% of the Canadian output. Manitoba and Saskatchewan together account for 8% of the papers, whereas the Atlantic Provinces account for 7%. This distribution is similar to that obtained for all scientific disciplines. For instance, Ontario published 45% of the papers in the Science Citation Index in 2000, Quebec 24% and British Columbia 14%.



* Prairies: Manitoba, Saskatchewan and Alberta

** Atlantic: Newfoundland, Prince Edward Island, Nova Scotia and New Brunswick

Figure 3. Canadian provinces' share of scientific production in MHWP, 1991-2002

Source: Compiled by Science-Metrix from the Medline database.

Table 1 reveals that output in MHWP is rising steadily in Ontario and in British Columbia. Quebec, Alberta and the smaller provinces are experiencing more erratic patterns. However, the number of papers is quite small at the provincial level, and one should be careful in the interpretation of these statistics.

Table 1. Number of papers in MHWP research by Canadian province, 1991-2002

Province	1991-1993	1994-1996	1997-1999	2000-2002	TOTAL
Ontario	26	31	55	65	177
Quebec	14	13	27	26	80
British Columbia	4	6	11	15	36
Alberta	9	4	6	15	34
Nova Scotia	3	3	7	7	20
Manitoba	4	8	4	3	19
Saskatchewan	1	3	2	4	10
New Brunswick		1		1	2
Newfoundland	1			1	2
Prince Edward Island			1		1
Canada TOTAL	62	69	113	137	381

Source: Compiled by Science-Metrix from the Medline database.

Figure 4 shows that Manitoba, although not a large producer overall, is the leader in terms of papers per capita. It also confirms the leadership position exerted by Ontario and shows that Alberta is also an important producer of scientific output in MHWP research considering its size. On the other hand, British Columbia is below the Canadian average output per capita. Nova Scotia, which appears as part of the Atlantic Provinces, also scores highly in terms of papers per capita.

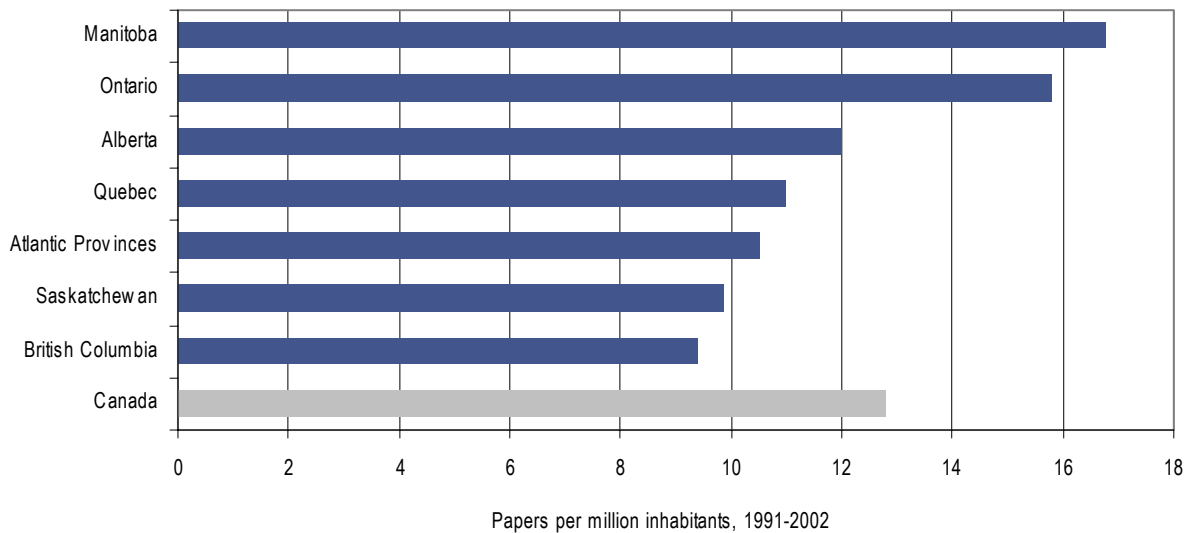


Figure 4. Papers per million inhabitants per province, 1991-2002

Source: Compiled by Science-Metrix from the Medline database.

Figure 5 shows that, although the Atlantic Provinces' overall output is low, it is nonetheless more important than that observed generally in biomedical science – in other words, these provinces specialize in MHWP. In Table 1, it is immediately clear that Nova Scotia is the province that pulls the Atlantic in terms of specialization. Manitoba comes second after these provinces, thus confirming that in relative terms Manitoba is one of the leaders in Canada in MHWP. Ontario is also specialized in this field, which confirms that Ontario is the clear leader in MHWP in Canada in absolute terms, and its position as leader is confirmed by two relative measures (i.e., papers per capita and index of specialization). Saskatchewan, Quebec, British Columbia and Alberta do not specialize in this field.

It is important to note that since research on MHWP appears to be nascent in Canada, these readings might be subject to change in the near future, not only in terms of papers per capita but also in terms of specialization index.

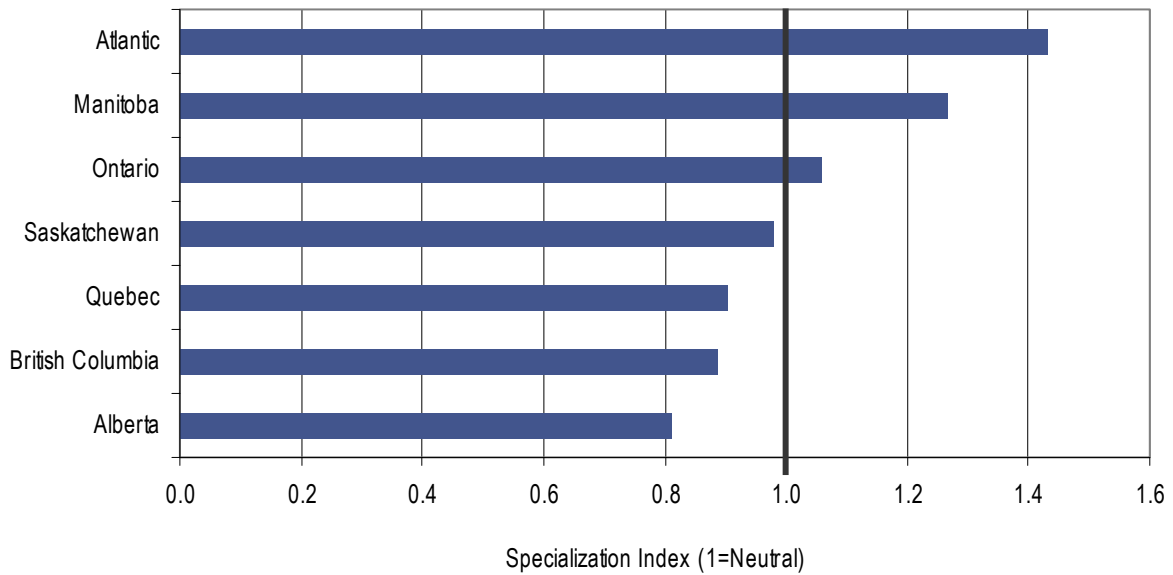


Figure 5. Specialization index of Canadian provinces, 1991-2002.

Source: Compiled by Science-Metrix from the Medline database.

4. Scientific output at the urban and institutional levels

Table 2 shows that, at the urban level, Toronto is the clear leader overall in terms of MHWP. One can also see here that its output is rising steadily. Montreal occupies the second rank, while Vancouver comes third. London and Hamilton complete this ranking of Canadian cities, with at least two papers per year on average. Winnipeg, Edmonton, Quebec City, Ottawa and Halifax all have at least one paper on MHWP per year on average. Halifax is the only city from the Atlantic region that makes it to the ranks of Canadian cities, having published at least 6 papers during the 1991-2002 period.

Table 2. Most productive Canadian cities in MHWP research, 1991-2002*

City	1991-1993	1994-1996	1997-1999	2000-2002	TOTAL
Toronto	11	16	19	33	79
Montreal	11	8	18	18	55
Vancouver	4	4	10	12	30
London	4	3	11	10	28
Hamilton	3	5	9	9	26
Winnipeg	4	8	4	3	19
Edmonton	7	2	3	7	19
Quebec	1	5	7	6	19
Ottawa	3	1	5	7	16
Halifax	3	2	2	6	13
Calgary	1	1	1	7	10
Kingston	2	1	3	3	9
Saskatoon	1	1	2	2	6
Wolfville		1	4	1	6

* Cities that produced a minimum of 6 papers over the period (1991-2002)

Source: Compiled by Science-Metrix from the Medline database.

There is no institution in Canada that really stands out as a very large producer of papers on MHWP. In fact, the leader, McMaster University, has only two papers per year on average in the field. Other leaders include the Université de Montréal, University of Toronto, University of British Columbia and University of Western Ontario – all with at least 1.5 papers per year on average. Although Manitoba stands out at the provincial level in terms of its size, the University of Manitoba only managed to publish one paper on MHWP per year on average.

Table 3. Most productive Canadian institutions in MHWP research, 1991-2002*

Institution	1991-1993	1994-1996	1997-1999	2000-2002	TOTAL
McMaster University	2	4	9	9	24
Université de Montréal	2	6	3	10	21
University of Toronto	3	6	2	10	21
University of British Columbia	2	3	7	7	19
University of Western Ontario	4	2	5	7	18
Centre for Addiction and Mental Health	6	2	5	4	17
Université Laval		5	7	4	16
University of Alberta	6	1	3	5	15
York University	2	3	2	7	14
University of Manitoba	2	6	1	3	12
UQÀM	3	1	6	2	12
McGill University	5		2	2	9
Dalhousie University	3	1	1	3	8
Queen's University	1	1	3	3	8
University of Calgary	1	1	1	5	8
Acadia University		1	4	1	6
Institute for Work & Health			1	5	6
University Health Network			3	3	6

* Institutions that produced a minimum of 6 papers over the period (1991-2002)

Source: Compiled by Science-Metrix from the Medline database.

5. Scientific output at the researcher level

Table 4 comprises researchers with at least three papers in the field of MHWP. These data were validated manually to detect erroneous homonymic counts¹ and to determine the authors' affiliations. Annex 2 presents all the authors who produced at least one paper on MHWP between 1991 and 2002 with a Canadian as first author and that were indexed in Medline.

McMaster University is confirmed as the leading centre on MHWP research in Canada, since in addition to having the greatest number of papers per institution, it has the largest number of authors in the list of most active researchers in the field (seven authors). The Centre for Addiction and Mental Health (CAMH) and Université Laval, which respectively ranked sixth and seventh in terms of the most active institutions in MHWP, both rank second in terms of number of most active researchers (with four researchers each). The Institute for Work & Health and UQÀM have three top-ranking researchers each, while Acadia University, Université de Montréal, University of Toronto and York University have two researchers each.

Although the majority of the most active researchers are located in universities, there are also researchers from the CAMH (as seen above), from the Centre hospitalier affilié universitaire de Québec (CHA Québec), from the Douglas Hospital in Montreal, from Health Canada and from the Institute for Work & Health – thus, about a quarter of leading researchers are located outside a university (that is not to say that these centres are unaffiliated to a university though).

¹ For instance, Smith, J. could actually be two authors, e.g. Jennifer Smith or John Smith. Of course, it would be an error to impute 10 papers to a J. Smith if Jennifer had written 6 papers and John 4. The validation involves checking papers one by one to ascertain that counts by author are due to a single researcher rather than homonyms.

Table 4. Most productive Canadian researchers in MHWP research, 1991-2002*

Name	Institution	Unit
Asmundson, Gord	University of Regina	Faculty of Kinesiology and Health Studies
Beiser, Morton	CAMH	Social, Prevention and Health Policy Research Dept.
Berkowitz, Jonathan	University of British Columbia	Department of Family Practice
Bourbonnais, Renée	Université Laval	Département de réadaptation
Boyer, Richard	Université de Montréal	Centre de recherche Fernand-Seguin
Brisson, Chantal	Université Laval	Département de médecine sociale et préventive
Brunet, Alain	Douglas Hospital	Department of Psychiatry
Burke, Ronald J.	York University	Schulich School of Business
Chappell, Neena L.	University of Victoria	Centre on Aging
Cherry, Nicola	University of Alberta	Department of Public Health Sciences
Cole, Donald C.	Institute for Work & Health	Unknown
Cunningham, Charles	McMaster University	Dept. of Psychiatry & Behavioural Neurosciences
Dewa, Carolyn	CAMH	Social Prevention and Health Policy Research Dept.
Duquette, André	Université de Montréal	Faculte des sciences infirmieres
Eyles, John	McMaster University	Department of Clinical Epidemiology & Biostatistics
Glancy, Graham D.	McMaster University	Department of Psychiatry
Goering, Paula	CAMH	Social Prevention and Health Policy Research Dept.
Gottlieb, B. H.	University of Guelph	Department of Psychology
Greenglass, Esther	York University	Department of Psychology
Harvie, Phyllis	Acadia University	Psychology Department
Ibrahim, Selahadin	Toronto	Institute for Work & Health
Kelloway, E. Kevin	Saint Mary's University	Department of Management
Larocque, Brigitte	CHUQ	Unité de recherche en santé des populations
Laschinger, Heather K.	University of Western Ontario	School of Nursing
Leiter, Michael	Acadia University	Psychology Department
Lendrum, Bonnie	McMaster University	School of Nursing
McDonough, Peggy	University of Toronto	Department of Public Health Sciences
Mergler, Donna	UQÀM	Department des sciences biologiques - CINBIOSE
Messing, Karen	UQÀM	Department des sciences biologiques - CINBIOSE
Mishara, Brian Leslie	UQÀM	CRISE
Moisan, Jocelyne	Université Laval	Groupe de Recherche en Epidemiologie
Mustard, Cam	Institute for Work & Health	Unknown
Norton, Ron	University of Winnipeg	Department of Psychology
Patten, Scott B.	University of Calgary	Department of Psychiatry
Regehr, Cheryl	University of Toronto	School of Social Work
Shamian, Judith	Health Canada	Nursing Policy Office
Shannon, Harry	McMaster University	Department of Clinical Epidemiology & Biostatistics
Smart, Reginald G.	CAMH	Addiction Research Foundation Division
Stewart, N.J.	University of Saskatchewan	College of Nursing
Vézina, Michel	Université Laval	Département de médecine sociale et préventive
Walters, Vivienne	McMaster University	Department of Sociology
Woodward, Christel	McMaster University	Community Care Research Centre

* Researchers with at least three papers during the 1991-2002 period.

Source: Compiled by Science-Metrix from the Medline database.

6. Conclusion

The field of mental health in the workplace (MHWP) is a nascent scientific undertaking. Although MHWP's economic importance is well established, only about one-fifth of a percent of biomedical papers address this issue. Despite this, the field is growing in absolute terms at the world level, that is, from 535 papers indexed in Medline in 1991 to 940 in 2002 – a growth of 75% in 12 years.

Although overall output is still low, research on MHWP is growing faster in Canada than at the world level. During the last three years, the number of papers by Canada has tripled, and they now account for 5.5% of the world output in the field. Canada specializes in this field, having a proportion of papers on MHWP that is 20% higher than that of papers in Medline during the 1991-2002 period.

Within Canada, Ontario is the clear overall leader. It produces 46% of Canadian output and ranks second in papers per capita and third in terms of specialization in the field. Although Nova Scotia and Manitoba are not strong contenders in absolute terms, they rank highly in papers per capita as well as in terms of specialization in the field.

The cities that are most active in the field are Toronto and Montreal, while Vancouver, London and Hamilton are cities with at least two papers on MHWP per year on average. Not surprisingly, leading institutions in the field – McMaster University, Université de Montréal, University of Toronto, University of British Columbia and University of Western Ontario - are located in these cities.

Three-quarters of the top twenty researchers in the field are from universities. McMaster and Laval provide the largest number of leaders (four researchers each), while York hosts two of the leading researchers in the field.

The statistics presented in this report show that scientific activity in the field is still low. As such, the law of large numbers may not apply yet, and one should expect to see some volatility in the ranks of leading entities - be they provinces, cities, institutions and researchers - in the coming years. As such, this report provides an indication of research at an early stage in the development of the field, and one could expect changes in the geographical distribution of activities as the field matures in the next decade.

Annex 1. Number of MHWP papers by province and by city, 1991-2002

Province	City	1991-1993	1994-1996	1997-1999	2000-2002	TOTAL
Ontario						177
	Toronto	11	16	19	33	79
	London	4	3	11	10	28
	Hamilton	3	5	9	9	26
	Ottawa	3	1	5	7	16
	Kingston	2	1	3	3	9
	Guelph	1	1	3		5
	Sudbury	1	1	2	1	5
	Windsor			1	2	3
	St. Catharines		2			2
	Waterloo			2		2
	Brockville	1				1
	Collingwood		1			1
Quebec						80
	Montreal	11	8	18	18	55
	Quebec	1	5	7	6	19
	Rimouski	1				1
	Sherbrooke	1		1	2	4
	Trois-Rivières			1		1
British Columbia						36
	Vancouver	4	4	10	11	30
	Victoria		2		1	3
	Prince George				2	2
	Salmon Arm			1		1
Alberta						34
	Edmonton	7	2	3	7	19
	Calgary	1	1	1	7	10
	Lethbridge	1	1	1		3
	Red Deer			1		1
	Fort McMurray				1	1
Nova Scotia						20
	Halifax	3	2	1	6	13
	Wolfville		1	4	1	6
	Sydney			1		1
Manitoba						19
	Winnipeg	4	8	4	3	19
Saskatchewan						10
	Saskatoon	1	1	2	2	6
	Regina		2		2	4
New Brunswick						2
	Moncton		1			1
	Saint John				1	1
Newfoundland						2
	St. John's	1			1	2
Prince Edward Island						1
	Charlottetown			1		1
TOTAL	Canada	62	69	113	137	381

Source: Compiled by Science-Metrix from the Medline database.

Annex 2. Researchers who published at least one paper on MHWP with a Canadian as first author, 1991-2002

Abenheim, L	Beaton, R	Braun, K	Christenson, J M
Abrams, Karen M	Beaudet, M P	Bremner, R	Clarke, D
Acorn, S	Beaudry, J	Bricault, N	Clements, Paul T
Adlaf, E M	Beaumont, L	Brillon, P	Clifford, Tammy J
Adler, S	Bedard, D	Brisson, R J	Cockerill, Rhonda
Adrian, M	Begin, S	Brisson, C	Cohen, C
Agro, K	Beiser, M	Brisson, J	Colantonio, A
Alary, M	Beland, Francois	Brodeur, J	Cole, D C
Ali, J	Belanger, B	Brophy, J T	Collins, E
Allard, P	Belanger, S	Brotheridge, Celeste M	Collins, P I
Allen, C	Bell, C E	Brown, G T	Colotla, V A
Allerdings, M D	Bellavance, F	Brown, J	Comeau, M
Alleyne, B C	Benard, J	Brown, J B	Conlon, M
Allison, D G	Bergeron, R	Brown, K D	Connaughty, S
Almost, J	Berkowitz, J	Brown-DeGagne, A M	Connelly, I
Alvarado, Beatriz E	Best, J A	Browne, G	Cook, J V
Andermann, F	Bhaskara, S M	Bruce, Shirliana	Cook, K
Antony, M M	Bienefeld, M	Brunet, A	Copes, R
Arklie, M	Binkley, K E	Bryant, H E	Corbin, S
Armstron-Esther, C A	Birch, Stephen	Buckley, Richard E	Cormier, N
Armstrong, B	Blackford, K A	Bullock, L	Corneil, W
Armstrong-Stassen, M	Blackhouse, G	Burke, R J	Cossette, S
Arsenault, A	Blair, Nancy	Bury, Alison S	Coupland, N J
Ashforth, B E	Blake, J	Byrne, C	Couture, R T
Asmundson, G J	Blanchard, R	Cadsky, O	Coutu-Wakulczyk, G M
Aston, J	Blanchette, C	Calvert, B L	Craven, M A
Aubin, Ginette	Block, L	Camfield, C	Crockett, D J
Aubin, M	Bobocel, D R	Camfield, P	Crowe, J
Auger, C	Boivin, Diane B	Campbell, M Karen	Crustolo, A M
Averill, Jennifer B	Bonin, M F	Cann, B	Culp, D
Avison, W R	Boon, L	Cantin, B	Cunningham, C E
Avotri, J Y	Boucher, C	Cargo, M	Cunningham, D A
Baba, V V	Boudreau, R A	Carlson, D	Dab, W
Bagby, R Michael	Bourassa, D C	Carlson, P	Dagenais, G R
Bailey, P A	Bourassa, M	Caron, Staci	Daigle, M S
Bailey, P H	Bourbonnais, R	Carron, A V	Daines, P A
Bairati, I	Bourdouxhe, M A	Casey, A	D'Arcy, Carl
Baker, B	Bourgault, C	Centerwall, A R	David, M
Bakker, D	Bourgine, M	Chalifour, J	Davidson, S
Baldwin, M	Boustead, R	Chambers, L W	Davies, B
Bardon, E	Bouthillette, F	Chan-Yeung, M	Davies, Sharon
Barham, L	Boutilier, M A	Chappell, N L	Davis, J R
Baril, R H	Bowen, P	Charpentier, Nicole	Day, A L
Barling, J	Bowman, M L	Chartrand, E	Day, M
Barnes, G E	Boyer, G	Chehaitly, A	de Bosset, F
Barrette, Jacques	Boyer, R	Chen, S	de Man, A F
Basinski, A	Boyle, M	Cherry, N M	Dean, R A
Baylard, J F	Bradford, J	Chilcott, L A	Deaudelin, C
Bean, G	Brandon, R A	Choudhry, U	Del Ser, Teodoro
Beaton, D	Brands, B	Choy, T	Delmas, Philippe

DeLuca, V M	FitzGibbon, G M	Gregoire, M	Ibrahim, S A
Demers, P A	Fleetham, J A	Gregor, F	Iezzi, A
Denney, D	Flemons, W W	Gregory, D	Infante-Rivard, C
Dennis, R	Ford, J S	Grenier, J L	Irvine, J
Denton, Margaret	Fortier, I	Griffith, L	Irvine, M J
Dewa, C S	Fortin, M	Grunfeld, E	Isaacs, S
Dion, G	Foster, S	Grypma, S	Isbister, W
Dolan, S L	Foucault, C	Grzybowski, S	Iverson, G L
Donald, J	Fournier, Marc A	Guertin, S C	Iwasaki, Y
Dooley, J	Fraboni, M	Guidotti, T L	Jackson, D N
Doran, Diane	Frankel, S	Guilleminault, C	Jackson, T
Dow-Clarke, R Anne	Fraser, K L	Guruge, S	Jacobson, S J
Dowin, S	Freeman, S J	Guyatt, G	Jacono, B J
Downie, F	French, S	Haase, Mary	Jacono, J J
Drolet, D	Frizzell, C	Hachey, R	Jamal, M
Ducharme, F	Frombach, I K	Hafer, C	James, Francine O
Duchscher, J E	Frost, P	Hagey, R	Jewers, R
Dugbartey, A T	Fry, P S	Hall, B	Johnson, C
Dumais, L	Gafni, Amiram	Hall, W	Johnson, P J
Dumais, W	Gagnon, M	Haney, Colleen J	Johnson, R L
Dunlop, R	Galperin, B L	Hanson, E J	Johnston, J
Dunn, K W	Garci, Linda J	Hanson, R K	Jones, B
Dupuis, M	Garside, B	Harkness, Kate L	Jones, E
Duquette, A	Gaskowski, P	Harrick, L	Jones, M W
Durand, Marie-Jose	Gauthier, R	Harris, A	Jones, N
Dussault, M	Geddes, J	Harrison, Margaret J	Joyce, Anthony S
Dyck, Dianne	Gerber, G J	Harrisson, Madelaine	Jreige, Steve
Dyck, Isabel	Gerlach, Jacquelyn	Harvie, P	Julien, D
Eaves, D	Lochhaas	Harwood, G	Juniper, E F
Edwards, R G	Gerrish, R	Havens, D S	Kaasalainen, Sharon
Egan, S	Getty, L	Havlovic, S J	Kaminski, M
Ehrensaft, E	Gibson, B	Hawkins, R H	Kane, D
Ehrmann Feldman, D	Gien, L T	Hellyer, D	Kaspar, V
Erickson, D	Giguere, J	Hemsworth, D	Kates, N
Ernst, P	Giles-Fysh, N	Hendy, K C	Katic, M
Escalona, E	Gillrie, C	Hepburn, C G	Katz, J
Esdaile, J M	Gingras, S	Herbert, Carol P	Kaufert, P A
Eskes, G A	Giroux, G	Herman, E	Kaufmann, C
Evans, W K	Gladue, R	Hershler, R	Keddy, B
Everett, A M	Glancy, G	Hertzman, C	Keenan, S P
Eyles, J	Gliksman, L	Hetu, R	Keith, M M
Farant, J P	Godwin, M	Hibberd, J M	Kelloway, E K
Farewell, V T	Goeree, R	Higginbottom, S F	Kelly, S
Fargas-Babjak, A	Goering, P	Hilditch, J R	Kerouac, S
Farrar, S	Gold, N	Hill, J	Kerr, K L
Feather, J	Goldberg, G	Hodgetts, G	Kerr, M
Feeny, D	Gordon, K	Hodgins, D C	King, A
Feinstein, Anthony	Gorodzinsky, Fabian	Holness, D L	King, W D
Ferguson, K A	Gottlieb, B H	Hong, Quan Nha	Kinzel, A
Ferguson-Pare, M	Grafstein, E	Hope, L	Kishchuk, N
Fernandes, C M	Graham, K	Hou, F	Kivisto, J
Fillion, Joel S	Granger, D	House, R A	Klinger, L
Finegan, J	Green, L W	Howell, Andrew J	Knoefel, F
Finestone, H M	Green, P	Hughes, D	Knoop, R
Fischer, B	Greenglass, E R	Hylton, J H	Knott, Theresa
Fitch, M	Gregg, Robin	Iacono, W G	Koch, W J

Kojlak, J	Lillywhite, A	McKee, M D	Nikolaou, L
Konarski, R	Lin, E	McKelvie, R	Nilsson, T
Kositsky, A J	Lippel, K	McKessock, D	Nisker, J A
Kotteda, V	Lituchy, T R	McLeod, K	Noble, E G
Krahn, Harvey	Livingstone, H A	McLeod, R B	Noh, S
Kraus, R P	Lloyd, S	McMahon, L	Norman, R M
Kraut, A	Locker, D	McMillan, C	Norris, J
Kruse, K	Logan, A G	McNally, R J	Northcott, H C
Kuch, K	Loisel, Patrick	McRae, M P	Norton, G R
Kumar, S	Loiselle, Carmen G	Mead, Shery	Norton, P G
Kunz, J L	Loiselle, J	Medved, W	Norton, P J
Kushner, Kaysi Eastlick	Loney, P	Mercier, C	Novak, M
Labreche, F P	Loo, R	Mergler, D	Nutt, D J
Lachance, L	Lord, C	Messing, K	Oberle, K
Laflamme, N	Love, E J	Metz, L M	O'Brien, B J
Laforce, R Jr	Luescher, U A	Metzler, T J	O'Brien, Patti
Lafreniere, K	Lusk, C	Meyer, F	O'Brien-Pallas, Linda
Laing, M K	MacDonald, G	Middleton, J I	Offord, D
Lalonde, C	MacDonald, N E	Mignone, J	Ogborne, A C
Laroche, Chantal	Macdonald, S	Milgram, P	Ogilvie, R
Larocque, B	Macerollo, J	Miller, L	Ogloff, J R
Larocque, D	MacEwen, K E	Milliken, H	Ogrodniczuk, John S
Larribe, F	Mackenzie, B	Milne, R	O'Hara, P L
Larsen, D K	Mackinnon, J R	Milot, A	Ohayon, M M
Laschinger, H K	MacLaren, V V	Minnes, P	O'Kelly, B
Latimer, E A	Malla, A K	Mishara, B L	O'Kelly, J
Latour, S	Mann, R E	Mital, A	Oldridge, N
Laundry, B R	Mannell, R C	Mitchell, G J	O'Loane, M
Laurent, C	Marcoux, S	Mohr, E	Olsen, L
Lavanchy, M	Marion, S A	Moisan, J	Ostry, A S
Lavery, J	Markle-Reid, Maureen	Mondor, M	Ouellet, L
Leach, A J	Marmar, C R	Monroe, Scott M	Owen, John
Leach, P	Marriott, A	Montesanto, B	Ozanne, W G
LeBlanc, Manon Mireille	Martin, G L	Moore, C F	Pace, A
Leclaire, R	Maslach, C	Moore, L	Packer, D
Lee, R	Mason, R A	Morehouse, R	Page, Eileen P
Lee, R T	Masse, B	Morgan, Debra G	Palepu, Anita
Lee, Raymond T	Massicotte, P R	Morrison, H I	Palla, Linda L O'Brien
Lees, M C	Maurier, W L	Mortenson, Patricia	Passey, G
Lees, R E	May, K A	Moskowitz, D S	Paterson, D H
Legault, E	Mayr, J	Moszczynski, Alice B	Paterson, Michael
Leigh, G	Mayville, K	Mueser, Kim T	Patrick, L
Leiter, M P	McAfee, J G	Mulder, J	Patten, S B
Lemay, F	McAiney, C A	Murnaghan, M Lucas	Patton, D
Lemieux, A P	McCain, G A	Murphy, S	Paul, J
Lendrum, B	McCall, M	Murray, M	Peat, J K
Lenton, R	McCallum, M	Murray, Michael	Perrault, G
Lepage, D	McColl, Mary Ann	Murray, R P	Perusse, M
LeSage, P	McCormick, J	Mustard, C	Pesut, B
Levesque, L	McDonald, C	Muzin, F	Peternej-Taylor, C A
Levy, B A	McDonald, J C	Myles, W S	Peters, C
Levy, M	McDonough, Peggy	Myrick, Florence	Pettigrew, F P
Lewis, J	McDowell, I	Nanson, J	Philibert, L
Leznoff, A	McIndoe, K I	Nelson, T M	Phipps, L
Lian, Jason	McIntosh, J	Newbold, B	Pickett, W
Liao, J	McIntyre, J W	Nicholson, I R	Pike, K

Piper, W E	Sale, Joanna E M	Stoddart, Greg	Vinje, G
Plotkin, D	Salmi, L R	Stratford, P	Vyskocil, A
Polatajko, H J	Sandhu, B K	Streiner, D	Wakeling, H
Polimeni-Walker, I	Sanford, M	Stringer, B	Wall, R
Pongruengphant, R	Sassine, M P	Strohschein, Lisa	Wald, R
Potokar, J P	Saulnier, P	Stuart, P	Walsh, G
Pranger, T	Saurel-Cubizolles, M J	Stutzer, C	Walsh, G W
Priest, R G	Savard, J	Suedfeld, P	Walters, V
Proulx, R	Sawka, E	Suissa, S	Wang, J
Provencher, Helene L	Schechter, J	Sullivan, T	Waridel, S
Queinnec, Y	Schell, B H	Swenson, J R	Waters, B G
Raboud, J M	Schemitsch, E H	Sylvestre, M	Watson, David C
Rae, S	Schlosar, H	Szalai, J P	Watson, J
Ratner, P A	Schmidt, G	Tanguay, S M	Watterson, A
Rebeiro, K L	Scholten, D	Tardif, R	Way, M
Rector, N A	Schopler, E	Tate, R	Weber, W
Regehr, C	Scott, F E	Taylor, A W	Weiss, D S
Regehr, G	Seguin, R	Taylor, S	Wells, S
Rehm, J	Seifert, A M	Teasell, R W	Whelan, T J
Rehm, J	Semchuk, Karen M	Teschke, K	Wiebe, J
Reid, Doreen	Semenic, Sonia E	Tett, R P	Wiele, K
Reilly, S M	Sewitch, M J	Thommasen, H V	Wild, T C
Reutter, L I	Sexton, L	Thomson, Donna	Wilk, P
Rexroth, D	Shain, M	Thurston, N E	Wilkins, K
Rhodes, A	Shamian, J	Tien, G	Willan, A R
Richard, L	Shannon, H S	Tipliski, V M	Williams, K
Richardsen, A M	Shapiro, C M	Tobe, S W	Williams, R
Richardson, J S	Shaw, Brenda Laurie	Torrance, G	Williams-Keeler, L
Rivard, G E	Sheehy, O	Towers, A M	Willmer, J
Roach, Sally M	Shercliffe, R J	Townsend, E A	Wilson, K G
Roberts, J	Shields, M	Trojan, Lorraine	Wishart, L
Robichaud, L	Shrier, Ian	Trott, M	Wong, C
Robinson, Gail Erlick	Shulman, K I	Truchon, G	Woodcox, V
Robinson, S	Sibbald, W J	Trudel, M	Wood-Dauphinee, S
Robson, L	Sidani, Souraya	Tsai, W	Woodward, C A
Rodgers, C D	Sinclair, D E	Tully, S	Woolfenden, S R
Roesch, R	Singer, J	Turner, R J	Wowk, A
Rogers, H L	Single, E	Turritin, J	Wu, Z
Rogers, J M	Skelton-Green, J	Tyson, P D	Xie, X
Rogers, K A	Smart, R G	Tziner, A	Yonge, Olive
Roithmayr, Tony	Smith, B	Underwood, J	Yoo, D
Rondeau, K V	Smith, C A	Vachon, M L	Young, A
Rook, M	Smith, D	Van Ameringen, M R	Zacharatos, A
Rosenbloom, D	Smylie, J A	van der Wal, R	Zaza, C
Rosie, John S	Spaulding, S J	van Netten, C	Zeitlin, S B
Ross, H E	Speechley, Kathy N	Vedantham, K	Zeytinoglu, Isik Urla
Rossignol, M	Speechley, M	Venter, A	Zhang, J
Roth, D	Staley, D	Vermeulen, M	Zimmerman, G
Rousseau, A	Steel, G D	Vernich, L	Zirul, S
Royer, N	Stephenson, R	Vezina, L	Zitzelsberger, L
Runions, J	Stewart, D E	Vezina, M	Zunzunegui, Maria-
Russell, Grant M	Stewart, J	Vigil, Gloria J	Victoria
Rzasa, T	Stewart, N J	Villeneuve, M	Zuroff, David C
Salama, P	Stieb, D	Vinet, A	Zuzanek, J

Annex 3. Papers on MHWP with a Canadian as first author, 1991-2002

- 1: Abrams KM, Robinson GE. Occupational effects of stalking. *Can J Psychiatry*. 2002 Jun; 47(5): 468-72.
- 2: Acorn S. Head-injured survivors: caregivers and support groups. *J Adv Nurs*. 1993 Jan; 18(1): 39-45.
- 3: Adlaf EM, Smart RG, Walsh GW. Substance use and work disabilities among a general population. *Am J Drug Alcohol Abuse*. 1992; 18(4): 371-87.
- 4: Ali J, Avison WR. Employment transitions and psychological distress: the contrasting experiences of single and married mothers. *J Health Soc Behav*. 1997 Dec; 38(4): 345-62.
- 5: Alleyne BC, Stuart P, Copes R. Alcohol and other drug use in occupational fatalities. *J Occup Med*. 1991 Apr; 33(4): 496-500.
- 6: Allison DG. Assessing stress among public school principals in British Columbia. *Psychol Rep*. 1997 Jun; 80(3 Pt 2): 1103-14.
- 7: Almost J, Laschinger HK. Workplace empowerment, collaborative work relationships, and job strain in nurse practitioners. *J Am Acad Nurse Pract*. 2002 Sep; 14(9): 408-20.
- 8: Alvarado BE, Zunzunegui MV, Del Ser T, Beland F. Cognitive decline is related to education and occupation in a Spanish elderly cohort. *Aging Clin Exp Res*. 2002 Apr; 14(2): 132-42.
- 9: Armstrong-Esther CA, Brown KD, McAfee JG. Elderly patients: still clean and sitting quietly. *J Adv Nurs*. 1994 Feb; 19(2): 264-71.
- 10: Armstrong-Stassen M. Reactions of older employees to organizational downsizing: the role of gender, job level, and time. *J Gerontol B Psychol Sci Soc Sci*. 2001 Jul; 56(4): P234-43.
- 11: Asmundson GJ, Bonin MF, Frombach IK, Norton GR. Evidence of a disposition toward fearfulness and vulnerability to posttraumatic stress in dysfunctional pain patients. *Behav Res Ther*. 2000 Aug; 38(8): 801-12.
- 12: Asmundson GJ, Norton GR, Allardings MD, Norton PJ, Larsen DK. Posttraumatic stress disorder and work-related injury. *J Anxiety Disord*. 1998 Jan-Feb; 12(1): 57-69.
- 13: Asmundson GJ, Jacobson SJ, Allardings MD, Norton GR. Social phobia in disabled workers with chronic musculoskeletal pain. *Behav Res Ther*. 1996 Nov-Dec; 34(11-12): 939-43.
- 14: Aston J, Lavery J. The health of women in paid employment: effects of quality of work role, social support and cynicism on psychological and physical well-being. *Women Health*. 1993; 20(3): 1-25.
- 15: Aubin G, Hachey R, Mercier C. [The significance of daily activities in persons with severe mental disorders] *Can J Occup Ther*. 2002 Oct; 69(4): 218-28. French.
- 16: Aubin M, Vezina L, Allard P, Bergeron R, Lemieux AP. [Palliative care: profile of medical practice in the Quebec city region] *Can Fam Physician*. 2001 Oct; 47: 1999-2005. French.
- 17: Auger C, Latour S, Trudel M, Fortin M. [Post-traumatic stress disorder. After the flood in Saguenay] *Can Fam Physician*. 2000 Dec; 46(12): 2420-7. French.
- 18: Avotri JY, Walters V. "You just look at our work and see if you have any freedom on earth": Ghanaian women's accounts of their work and their health. *Soc Sci Med*. 1999 May; 48(9): 1123-33.

- 19: A benhaim L, Dab W, Salmi LR. Study of civilian victims of terrorist attacks (France 1982-1987). *J Clin Epidemiol.* 1992 Feb; 45(2): 103-9.
- 20: Baba VV, Galperin BL, Lituchy TR. Occupational mental health: a study of work-related depression among nurses in the Caribbean. *Int J Nurs Stud.* 1999 Apr; 36(2): 163-9.
- 21: Baker B, O'Kelly B, Szalai JP, Katic M, McKessock D, Ogilvie R, Basinski A, Tobe SW. Determinants of left ventricular mass in early hypertension. *Am J Hypertens.* 1998 Oct; 11(10): 1248-51.
- 22: Barling J, Zacharatos A, Hepburn CG. Parents' job insecurity affects children's academic performance through cognitive difficulties. *J Appl Psychol.* 1999 Jun; 84(3): 437-44.
- 23: Barling J, MacEwen KE, Kelloway EK, Higginbottom SF. Predictors and outcomes of elder-care-based interrole conflict. *Psychol Aging.* 1994 Sep; 9(3): 391-7.
- 24: Bedard D, Duquette A. [Professional exhaustion, a concept to be clarified] *Infirm Que.* 1998 Sep-Oct; 6(1): 18-23. Review. French. No abstract available.
- 25: Begin S, Gregoire M. [Causal relations of occupational psychiatric disability] *Can J Psychiatry.* 1991 Sep; 36(7): 485-91. Review. French.
- 26: Beiser M, Hou F. Language acquisition, unemployment and depressive disorder among Southeast Asian refugees: a 10-year study. *Soc Sci Med.* 2001 Nov; 53(10): 1321-34.
- 27: Beiser M, Bean G, Erickson D, Zhang J, Iacono WG, Rector NA. Biological and psychosocial predictors of job performance following a first episode of psychosis. *Am J Psychiatry.* 1994 Jun; 151(6): 857-63.
- 28: Beiser M, Edwards RG. Mental health of immigrants and refugees. *New Dir Ment Health Serv.* 1994 Spring; (61): 73-86. No abstract available.
- 29: Beiser M, Johnson PJ, Turner RJ. Unemployment, underemployment and depressive affect among Southeast Asian refugees. *Psychol Med.* 1993 Aug; 23(3): 731-43.
- 30: Beland F, Birch S, Stoddart G. Unemployment and health: contextual-level influences on the production of health in populations. *Soc Sci Med.* 2002 Dec; 55(11): 2033-52.
- 31: Best JA, Walsh G, Muzin F, Berkowitz J. Healthy hospital: toward a better tomorrow. A demonstration project to promote culture change through participatory decision making. *Healthc Manage Forum.* 1997 Fall; 10(3): 24-9, 32-3.
- 32: Bhaskara SM. Setting benchmarks and determining psychiatric workloads in community mental health programs. *Psychiatr Serv.* 1999 May; 50(5): 695-7.
- 33: Blackford KA, Bailey PH, Coutu-Wakulczyk GM. Tobacco use in northeastern Ontario teenagers: prevalence of use and associated factors. *Can J Public Health.* 1994 Mar-Apr; 85(2): 89-92.
- 34: Blanchard R, Collins PI. Men with sexual interest in transvestites, transsexuals, and she-males. *J Nerv Ment Dis.* 1993 Sep; 181(9): 570-5.
- 35: Block L. The employment connection: the application of an individual supported employment program for persons with chronic mental health problems. *Can J Commun Ment Health.* 1992 Fall; 11(2): 79-89.
- 36: Boivin DB, James FO. Circadian adaptation to night-shift work by judicious light and darkness exposure. *J Biol Rhythms.* 2002 Dec; 17(6): 556-67.
- 37: Boon L. Caring practices and the financial bottom line. *Can Nurse.* 1998 Mar; 94(3): 27-32.
- 38: Boudreau RA, Everett AM. Burnout in New Zealand: as good as gold. *J Health Hum Serv Adm.* 1999 Summer; 22(1): 37-43. No abstract available.

- 39: Bourassa DC, Levy BA, Dowin S, Casey A. Transfer effects across contextual and linguistic boundaries: evidence from poor readers. *J Exp Child Psychol.* 1998 Oct; 71(1): 45-61.
- 40: Bourassa M, Baylard JF. Stress situations in dental practice. *J Can Dent Assoc.* 1994 Jan; 60(1): 65-7, 70-1.
- 41: Bourbonnais R, Mondor M. Job strain and sickness absence among nurses in the province of Quebec. *Am J Ind Med.* 2001 Feb; 39(2): 194-202.
- 42: Bourbonnais R, Comeau M, Vezina M. Job strain and evolution of mental health among nurses. *J Occup Health Psychol.* 1999 Apr; 4(2): 95-107.
- 43: Bourbonnais R, Comeau M, Vezina M, Dion G. Job strain, psychological distress, and burnout in nurses. *Am J Ind Med.* 1998 Jul; 34(1): 20-8.
- 44: Bourbonnais R, Brisson C, Moisan J, Vezina M. Job strain and psychological distress in white-collar workers. *Scand J Work Environ Health.* 1996 Apr; 22(2): 139-45.
- 45: Bourdouxhe MA, Queinnec Y, Granger D, Baril RH, Guertin SC, Massicotte PR, Levy M, Lemay FL. Aging and shiftwork: the effects of 20 years of rotating 12-hour shifts among petroleum refinery operators. *Exp Aging Res.* 1999 Oct-Dec; 25(4): 323-9.
- 46: Bowen P. Preparing for expansion in Canadian home care. *Caring.* 1992 Oct; 11(10): 94-7.
- 47: Brandon RA, Waters BG. Dentists at risk: the Ontario experience. *J Can Dent Assoc.* 1996 Jul; 62(7): 566-7. No abstract available.
- 48: Bricault N, Foucault C. [The survivor syndrome. Heading for new ground] *Infirm Que.* 1998 Sep-Oct; 6(1): 25-8. French. No abstract available.
- 49: Brisson C, Larocque B. [Validity of occupational stress and decision latitude on health in the National Population Health Survey of 1994-95] *Can J Public Health.* 2001 Nov-Dec; 92(6): 468-74. French.
- 50: Brisson C, Larocque B, Bourbonnais R. [Impact of occupational stress on health status in Canada] *Can J Public Health.* 2001 Nov-Dec; 92(6): 460-7. French.
- 51: Brisson C, Larocque B, Moisan J, Vezina M, Dagenais GR. Psychosocial factors at work, smoking, sedentary behavior, and body mass index: a prevalence study among 6995 white collar workers. *J Occup Environ Med.* 2000 Jan; 42(1): 40-6.
- 52: Brisson C, Laflamme N, Moisan J, Milot A, Masse B, Vezina M. Effect of family responsibilities and job strain on ambulatory blood pressure among white-collar women. *Psychosom Med.* 1999 Mar-Apr; 61(2): 205-13.
- 53: Brisson C, Vezina M, Vinet A. Health problems of women employed in jobs involving psychological and ergonomic stressors: the case of garment workers in Quebec. *Women Health.* 1992; 18(3): 49-65.
- 54: Brodeur J, Vyskocil A, Tardif R, Perrault G, Drolet D, Truchon G, Lemay F. Adjustment of permissible exposure values to unusual work schedules. *AIHAJ.* 2001 Sep-Oct; 62(5): 584-94.
- 55: Brotheridge CM, Lee RT. Testing a conservation of resources model of the dynamics of emotional labor. *J Occup Health Psychol.* 2002 Jan; 7(1): 57-67.
- 56: Brown GT, Pranger T. Predictors of burnout for psychiatric occupational therapy personnel. *Can J Occup Ther.* 1992 Dec; 59(5): 258-67. Review.
- 57: Brown JB. Female family doctors: their work and well-being. *Fam Med.* 1992 Nov-Dec; 24(8): 591-5.
- 58: Brown-DeGagne AM, Eskes GA. Turning body time to shift time. *Can Nurse.* 1998 Sep; 94(8): 51-2. Review.
- 59: Bruce S, Sale JE, Shamian J, O'Brien-Pallas L, Thomson D. Musculoskeletal injuries, stress and absenteeism. *Can Nurse.* 2002 Oct; 98(9): 12-7. No abstract available.

- 60: Brunet A, Boyer R, Brillon P, Ehrensaft E, Stephenson R. Lifetime exposure to traumatic events among a sample of city bus drivers. *Psychol Rep.* 1998 Dec; 83(3 Pt 2): 1155-60.
- 61: Brunet A, Boucher C, Boyer R. Social desirability in the assessment of trauma. *Psychol Rep.* 1996 Oct; 79(2): 511-4.
- 62: Bryant HE, Love EJ. Effect of employment and its correlates on spontaneous abortion risk. *Soc Sci Med.* 1991; 33(7): 795-800.
- 63: Burke RJ. The ripple effect: it's time for health care leaders to address staff concerns following restructuring. *Nurs Manage.* 2002 Feb; 33(2): 41-2. Review.
- 64: Burke RJ. Surviving hospital restructuring. Next steps. *J Nurs Adm.* 2001 Apr; 31(4): 169-72. No abstract available.
- 65: Burke RJ, Greenglass ER. Effects of hospital restructuring on full time and part time nursing staff in Ontario. *Int J Nurs Stud.* 2000 Apr; 37(2): 163-71.
- 66: Burke RJ. Workaholism and divorce. *Psychol Rep.* 2000 Feb; 86(1): 219-20.
- 67: Burke RJ, Greenglass ER. Work-family conflict, spouse support, and nursing staff well-being during organizational restructuring. *J Occup Health Psychol.* 1999 Oct; 4(4): 327-36.
- 68: Burke RJ. Stress, satisfaction and militancy among Canadian physicians: a longitudinal investigation. *Soc Sci Med.* 1996 Aug; 43(4): 517-24.
- 69: Burke RJ, Greenglass ER. A longitudinal examination of the Cherniss model of psychological burnout. *Soc Sci Med.* 1995 May; 40(10): 1357-63.
- 70: Burke RJ. Stressful events, work-family conflict, coping, psychological burnout, and well-being among police officers. *Psychol Rep.* 1994 Oct; 75(2): 787-800.
- 71: Burke RJ, Greenglass E. Work stress, role conflict, social support, and psychological burnout among teachers. *Psychol Rep.* 1993 Oct; 73(2): 371-80.
- 72: Bury AS, Bagby RM. The detection of feigned uncoached and coached posttraumatic stress disorder with the MMPI-2 in a sample of workplace accident victims. *Psychol Assess.* 2002 Dec; 14(4): 472-84.
- 73: Camfield C, Camfield P, Smith B, Gordon K, Dooley J. Biologic factors as predictors of social outcome of epilepsy in intellectually normal children: a population-based study. *J Pediatr.* 1993 Jun; 122(6): 869-73.
- 74: Centerwall AR. A lily for a nurse. *J Christ Nurs.* 1997 Summer; 14(3): 34-5. No abstract available.
- 75: Chalifour J. [Nurses and grief. Elements for reflection] *Soins.* 1998 Jan-Feb; (622): 39-44. French. No abstract available.
- 76: Chappell NL, Novak M. The role of support in alleviating stress among nursing assistants. *Gerontologist.* 1992 Jun; 32(3): 351-9.
- 77: Chehaitly A, Alary M. Knowledge, attitudes, and professional behaviors of third- and fourth-year dental students concerning AIDS and hepatitis B. *J Dent Educ.* 1995 Aug; 59(8): 844-9. No abstract available.
- 78: Cherry NM, Labreche FP, McDonald JC. Organic brain damage and occupational solvent exposure. *Br J Ind Med.* 1992 Nov; 49(11): 776-81.
- 79: Chilcott LA, Shapiro CM. The socioeconomic impact of insomnia. An overview. *Pharmacoeconomics.* 1996; 10 Suppl 1: 1-14. Review.
- 80: Choy T, de Bosset F. Post-traumatic stress disorder: an overview. *Can J Psychiatry.* 1992 Oct; 37(8): 578-83. Review.

- 81: Clifford TJ, Campbell MK, Speechley KN, Gorodzinsky F. Infant colic: empirical evidence of the absence of an association with source of early infant nutrition. *Arch Pediatr Adolesc Med.* 2002 Nov; 156(11): 1123-8.
- 82: Cockerill R, Palla LL, Murray M, Doran D, Sidani S, Shaw BL, Gerlach JL. Adequacy of time per visit in community nursing. *Res Theory Nurs Pract.* 2002 Spring; 16(1): 43-51.
- 83: Colantonio A, Kositsky AJ, Cohen C, Vernich L. What support do caregivers of elderly want? Results from the Canadian Study of Health and Aging. *Can J Public Health.* 2001 Sep-Oct; 92(5): 376-9.
- 84: Cole DC, Ibrahim S, Shannon HS, Scott FE, Eyles J. Work and life stressors and psychological distress in the Canadian working population: a structural equation modelling approach to analysis of the 1994 National Population Health Survey. *Chronic Dis Can.* 2002 Summer; 23(3): 91-9.
- 85: Colotta VA, Bowman ML, Shercliffe RJ. Test-retest stability of injured workers' MMPI-2 profiles. *Psychol Assess.* 2001 Dec; 13(4): 572-6.
- 86: Corneil W, Beaton R, Murphy S, Johnson C, Pike K. Exposure to traumatic incidents and prevalence of posttraumatic stress symptomatology in urban firefighters in two countries. *J Occup Health Psychol.* 1999 Apr; 4(2): 131-41.
- 87: Cossette S, Levesque L. Caregiving tasks as predictors of mental health of wife caregivers of men with chronic obstructive pulmonary disease. *Res Nurs Health.* 1993 Aug; 16(4): 251-63.
- 88: Coupland NJ, Lillywhite A, Bell CE, Potokar JP, Nutt DJ. A pilot controlled study of the effects of flumazenil in posttraumatic stress disorder. *Biol Psychiatry.* 1997 May 1; 41(9): 988-90. No abstract available.
- 89: Cunningham CE, Davis JR, Bremner R, Dunn KW, Rzasza T. Coping modeling problem solving versus mastery modeling: effects on adherence, in-session process, and skill acquisition in a residential parent-training program. *J Consult Clin Psychol.* 1993 Oct; 61(5): 871-7.
- 90: Daigle MS, Mishara BL. Intervention styles with suicidal callers at two suicide prevention centers. *Suicide Life Threat Behav.* 1995 Summer; 25(2): 261-75.
- 91: Daines PA. Personality hardiness: an essential attribute for the ICU nurse? *Dynamics.* 2000 Winter; 11(4): 18-21. Review.
- 92: Davies B, Clarke D, Connaughty S, Cook K, MacKenzie B, McCormick J, O'Loane M, Stutzer C. Caring for dying children: nurses' experiences. *Pediatr Nurs.* 1996 Nov-Dec; 22(6): 500-7.
- 93: Day AL, Jreige S. Examining Type A behavior pattern to explain the relationship between job stressors and psychosocial outcomes. *J Occup Health Psychol.* 2002 Apr; 7(2): 109-20.
- 94: Day AL, Livingstone HA. Chronic and acute stressors among military personnel: do coping styles buffer their negative impact on health? *J Occup Health Psychol.* 2001 Oct; 6(4): 348-60.
- 95: Dean RA. Occupational stress in hospice care: causes and coping strategies. *Am J Hosp Palliat Care.* 1998 May-Jun; 15(3): 151-4.
- 96: Delmas P, Duquette A. [Hardiness, coping and quality of life of nurses working in intensive care units] *Rech Soins Infirm.* 2000 Mar; (60): 17-26. French.
- 97: Denton M, Zeytinoglu IU, Davies S, Lian J. Job stress and job dissatisfaction of home care workers in the context of health care restructuring. *Int J Health Serv.* 2002; 32(2): 327-57.
- 98: Denton MA, Zeytinoglu IU, Davies S. Working in clients' homes: the impact on the mental health and well-being of visiting home care workers. *Home Health Care Serv Q.* 2002; 21(1): 1-27.
- 99: Dewa CS, Goering P, Lin E, Paterson M. Depression-related short-term disability in an employed population. *J Occup Environ Med.* 2002 Jul; 44(7): 628-33.

- 100: Dewa CS, Lin E. Chronic physical illness, psychiatric disorder and disability in the workplace. *Soc Sci Med*. 2000 Jul; 51(1): 41-50.
- 101: Dolan SL, Van Ameringen MR, Corbin S, Arsenault A. Lack of professional latitude and role problems as correlates of propensity to quit amongst nursing staff. *J Adv Nurs*. 1992 Dec; 17(12): 1455-9.
- 102: Donald J. What makes your day? A study of the quality of worklife of OR nurses. *Can Oper Room Nurs J*. 1999 Dec; 17(4): 17-27.
- 103: Dow-Clarke RA. Work-life balance in an industrial setting. Focus on advocacy. *AAOHN J*. 2002 Feb; 50(2): 67-74. Review.
- 104: Duchscher JE. Out in the real world: newly graduated nurses in acute-care speak out. *J Nurs Adm*. 2001 Sep; 31(9): 426-39. Erratum in: *J Nurs Adm* 2001 Dec; 31(12): 569.
- 105: Dugbartey AT. Nonverbal learning disability: adult outcomes. *Semin Clin Neuropsychiatry*. 2000 Jul; 5(3): 198-204. Review.
- 106: Duquette A, Delmas P. [Working conditions. Does work threaten the health of nurses?] *Krankenpfl Soins Infirm*. 2002; 95(12): 70-3. French. No abstract available.
- 107: Duquette A, Delmas P. [Working conditions. Does the work endanger mental health of nursing?] *Krankenpfl Soins Infirm*. 2002; 95(11): 68-72. French. No abstract available.
- 108: Duquette A, Kerouac S, Sandhu BK, Saulnier P, Lachance L. [Validation of a model of psychosocial determinants of occupational health of geriatric nurses] *Sante Ment Que*. 1997 Autumn; 22(2): 257-78. French.
- 109: Duquette A, Kerouac S, Sandhu BK, Ducharme F, Saulnier P. Psychosocial determinants of burnout in geriatric nursing. *Int J Nurs Stud*. 1995 Oct; 32(5): 443-56.
- 110: Durand MJ, Loisel P, Hong QN, Charpentier N. Helping clinicians in work disability prevention: the work disability diagnosis interview. *J Occup Rehabil*. 2002 Sep; 12(3): 191-204.
- 111: Dussault M, Deaudelin C, Royer N, Loïselle J. Professional isolation and occupational stress in teachers. *Psychol Rep*. 1999 Jun; 84(3 Pt 1): 943-6.
- 112: Dyck D, Roithmayr T. Organizational stressors and health. How occupational health nurses can help break the cycle. *AAOHN J*. 2002 May; 50(5): 213-9. Review.
- 113: Ehrmann Feldman D, Shrier I, Rossignol M, Abenham L. Risk factors for the development of neck and upper limb pain in adolescents. *Spine*. 2002 Mar 1; 27(5): 523-8.
- 114: Feather J, Irvine J, Belanger B, Dumais W, Gladue R, Isbister W, Leach P. Promoting social health in northern Saskatchewan. *Can J Public Health*. 1993 Jul-Aug; 84(4): 250-3.
- 115: Feinstein A, Owen J, Blair N. A hazardous profession: war, journalists, and psychopathology. *Am J Psychiatry*. 2002 Sep; 159(9): 1570-5.
- 116: Ferguson-Pare M, Mitchell GJ. When silence makes a difference. *Can J Nurs Leadersh*. 2002 Sep-Oct; 15(3): 9-10. No abstract available.
- 117: Ferguson-Pare M, Mitchell GJ. "Let's get real". Turning a blind eye or seeing truth. *Can J Nurs Leadersh*. 2002 May-Jun; 15(2): 7-9. No abstract available.
- 118: Fernandes CM, Bouthillette F, Raboud JM, Bullock L, Moore CF, Christenson JM, Grafstein E, Rae S, Ouellet L, Gillrie C, Way M. Violence in the emergency department: a survey of health care workers. *CMAJ*. 1999 Nov 16; 161(10): 1245-8.

- 119: Fillion JS, Clements PT, Averill JB, Vigil GJ. Talking as a primary method of peer defusing for military personnel exposed to combat trauma. *J Psychosoc Nurs Ment Health Serv.* 2002 Aug; 40(8): 40-9. Review.
- 120: Fitch M. Supportive care for cancer patients. *Hosp Q.* 2000 Summer; 3(4): 39-46. Review. No abstract available.
- 121: Fitch MI, Bakker D, Conlon M. Important issues in clinical practice: perspectives of oncology nurses. *Can Oncol Nurs J.* 1999 Fall; 9(4): 151-64. English, French.
- 122: Flemons WW, Tsai W. Quality of life consequences of sleep-disordered breathing. *J Allergy Clin Immunol.* 1997 Feb; 99(2): S750-6. Review.
- 123: Fortier I, Marcoux S, Brisson J. Maternal work during pregnancy and the risks of delivering a small-for-gestational-age or preterm infant. *Scand J Work Environ Health.* 1995 Dec; 21(6): 412-8.
- 124: Fournier MA, Moskowitz DS, Zuroff DC. Social rank strategies in hierarchical relationships. *J Pers Soc Psychol.* 2002 Aug; 83(2): 425-33.
- 125: Frankel S. Methodological issues in efficiency-focused program evaluation: the case of mental health. *Adm Soc Work.* 1991; 15(1-2): 65-81. Review. No abstract available.
- 126: French SE, Lenton R, Walters V, Eyles J. An empirical evaluation of an expanded Nursing Stress Scale. *J Nurs Meas.* 2000 Fall-Winter; 8(2): 161-78.
- 127: Frost P, Robinson S. The toxic handler: organizational hero--and casualty. *Harv Bus Rev.* 1999 Jul-Aug; 77(4): 96-106, 185.
- 128: Fry PS. Perfectionism, humor, and optimism as moderators of health outcomes and determinants of coping styles of women executives. *Genet Soc Gen Psychol Monogr.* 1995 May; 121(2): 211-45.
- 129: Gagnon M. Residential care facilities, 1991-92. *Health Rep.* 1993; 5(4): 369-72. English, French. No abstract available.
- 130: Garci LJ, Laroche C, Barrette J. Work integration issues go beyond the nature of the communication disorder. *J Commun Disord.* 2002 Mar-Apr; 35(2): 187-211.
- 131: Garside B. Physicians mutual aid group: a response to AIDS-related burnout. *Health Soc Work.* 1993 Nov; 18(4): 259-67.
- 132: Gien LT. Land and sea connection: the east coast fishery closure, unemployment and health. *Can J Public Health.* 2000 Mar-Apr; 91(2): 121-4.
- 133: Giguere J, Julien D, Mergler D, Baldwin M, Chartrand E. [Association between work exposure to neurotoxic substances with workers' relationships with their social network] *Rev Epidemiol Sante Publique.* 2001 Oct; 49(5): 459-69. French.
- 134: Godwin M, Hodgetts G, Bardon E, Seguin R, Packer D, Geddes J. Primary care in Bosnia and Herzegovina. Health care and health status in general practice ambulatory care centres. *Can Fam Physician.* 2001 Feb; 47: 289-97.
- 135: Goeree R, O'Brien BJ, Blackhouse G, Agro K, Goering P. The valuation of productivity costs due to premature mortality: a comparison of the human-capital and friction-cost methods for schizophrenia. *Can J Psychiatry.* 1999 Jun; 44(5): 455-63.
- 136: Goeree R, O'Brien BJ, Goering P, Blackhouse G, Agro K, Rhodes A, Watson J. The economic burden of schizophrenia in Canada. *Can J Psychiatry.* 1999 Jun; 44(5): 464-72.

- 137: Gold N. Using participatory research to help promote the physical and mental health of female social workers in child welfare. *Child Welfare*. 1998 Nov-Dec; 77(6): 701-24.
- 138: Goldberg G, Boustead R. Compassion. *J Emerg Med Serv JEMS*. 1998 Feb; 23(2): 34-5, 37-40. No abstract available.
- 139: Gottlieb BH, Kelloway EK, Fraboni M. Aspects of eldercare that place employees at risk. *Gerontologist*. 1994 Dec; 34(6): 815-21.
- 140: Green P, Iverson GL. Validation of the computerized assessment of response bias in litigating patients with head injuries. *Clin Neuropsychol*. 2001 Dec; 15(4): 492-7.
- 141: Greenglass ER, Burke RJ. Stress and the effects of hospital restructuring in nurses. *Can J Nurs Res*. 2001 Sep; 33(2): 93-108.
- 142: Greenglass ER, Burke RJ, Konarski R. A study of the consistency of burnout over time. *J Health Hum Serv Adm*. 1999 Spring; 21(4): 429-40.
- 143: Grenier JL, Swenson JR, FitzGibbon GM, Leach AJ. Psychosocial aspects of coronary artery disease related to military patients. *Can J Psychiatry*. 1997 Mar; 42(2): 176-84. Review.
- 144: Grunfeld E, Whelan TJ, Zitzelsberger L, Willan AR, Montesanto B, Evans WK.
Cancer care workers in Ontario: prevalence of burnout, job stress and job satisfaction. *CMAJ*. 2000 Jul 25; 163(2): 166-9.
- 145: Grypma S. Addressing overload practices. *Can Nurse*. 2001 Oct; 97(9): 8-9. No abstract available.
- 146: Guidotti TL. Human factors in firefighting: ergonomic-, cardiopulmonary-, and psychogenic stress-related issues. *Int Arch Occup Environ Health*. 1992; 64(1): 1-12. Review.
- 147: Hachey R, Boyer G, Mercier C. Perceived and valued roles of adults with severe mental health problems. *Can J Occup Ther*. 2001 Apr; 68(2): 112-20.
- 148: Hagey R, Choudhry U, Guruge S, Turriffin J, Collins E, Lee R. Immigrant nurses' experience of racism. *J Nurs Scholarsh*. 2001; 33(4): 389-94.
- 149: Hall B, Schlosar H. Repeat callers and the Samaritan telephone crisis line--a Canadian experience. *Crisis*. 1995; 16(2): 66-71, 89.
- 150: Hall W. The experience of fathers in dual-earner families following the births of their first infants. *J Adv Nurs*. 1991 Apr; 16(4): 423-30.
- 151: Hall WA. New fatherhood: myths and realities. *Public Health Nurs*. 1994 Aug; 11(4): 219-28.
- 152: Hanson EJ. Psychological support at night. A pilot study. *Cancer Nurs*. 1994 Oct; 17(5): 379-84.
- 153: Hanson RK, Cadsky O, Harris A, Lalonde C. Correlates of battering among 997 men: family history, adjustment, and attitudinal differences. *Violence Vict*. 1997 Fall; 12(3): 191-208.
- 154: Harkness KL, Monroe SM. Childhood adversity and the endogenous versus nonendogenous distinction in women with major depression. *Am J Psychiatry*. 2002 Mar; 159(3): 387-93.
- 155: Harrisson M, Loiselle CG, Duquette A, Semenic SE. Hardiness, work support and psychological distress among nursing assistants and registered nurses in Quebec. *J Adv Nurs*. 2002 Jun; 38(6): 584-91.
- 156: Harwood G, McIndoe KI. Aggression: one hospital responds. *Leadersh Health Serv*. 1995 Jul-Aug; 4(4): 6-8, 16.
- 157: Hawkins RH, Dunlop R. Nonoperative treatment of rotator cuff tears. *Clin Orthop*. 1995 Dec; (321): 178-88.

- 158: Hendy KC, Liao J, Milgram P. Combining time and intensity effects in assessing operator information-processing load. *Hum Factors*. 1997 Mar; 39(1): 30-47. Review.
- 159: Herman E, Williams R, Stratford P, Fargas-Babjak A, Trott M. A randomized controlled trial of transcutaneous electrical nerve stimulation (CODETRON) to determine its benefits in a rehabilitation program for acute occupational low back pain. *Spine*. 1994 Mar 1; 19(5): 561-8.
- 160: Hetu R, Getty L, Beaudry J, Philibert L. Attitudes towards co-workers affected by occupational hearing loss. I: Questionnaire development and inquiry. *Br J Audiol*. 1994 Dec; 28(6): 299-311.
- 161: Hetu R, Getty L, Waridel S. Attitudes towards co-workers affected by occupational hearing loss. II: Focus groups interviews. *Br J Audiol*. 1994 Dec; 28(6): 313-25.
- 162: Hibberd JM, Norris J. Striving for safety: experiences of nurses in a hospital under siege. *J Adv Nurs*. 1992 Apr; 17(4): 487-95.
- 163: Hilditch JR, Chen S, Norton PG, Lewis J. Experience of menopausal symptoms by Chinese and Canadian women. *Climacteric*. 1999 Sep; 2(3): 164-73.
- 164: Holness DL, Beaton D, House RA. Prevalence of upper extremity symptoms and possible risk factors in workers handling paper currency. *Occup Med (Lond)*. 1998 May; 48(4): 231-6.
- 165: Howell AJ, Watson DC. Perceived dysfunction of male-typed and female-typed DSM-IV personality disorder criteria. *J Personal Disord*. 2002 Dec; 16(6): 536-48.
- 166: Hylton JH. Care or control: health or criminal justice options for the long-term seriously mentally ill in a Canadian province. *Int J Law Psychiatry*. 1995 Winter; 18(1): 45-59. Review. No abstract available.
- 167: Ibrahim SA, Scott FE, Cole DC, Shannon HS, Eyles J. Job strain and self-reported health among working women and men: an analysis of the 1994/5 Canadian national population health survey. *Women Health*. 2001; 33(1-2): 105-24.
- 168: Ibrahim SA, Scott FE, Cole DC, Shannon HS, Eyles J. Job strain and self-reported health among working women and men: an analysis of the 1994/5 Canadian National Population Health Survey. *Women Health*. 2001; 33(1-2): 105-24.
- 169: Infante-Rivard C, David M, Gauthier R, Rivard GE. Pregnancy loss and work schedule during pregnancy. *Epidemiology*. 1993 Jan; 4(1): 73-5.
- 170: Irvine MJ, Logan AG. Is knowing your cholesterol number harmful? *J Clin Epidemiol*. 1994 Feb; 47(2): 131-45.
- 171: Iwasaki Y, Zuzanek J, Mannell RC. The effects of physically active leisure on stress-health relationships. *Can J Public Health*. 2001 May-Jun; 92(3): 214-8.
- 172: Jackson T, Iezzi A, Lafreniere K. The impact of psychosocial features of employment status on emotional distress in chronic pain and healthy comparison samples. *J Behav Med*. 1997 Jun; 20(3): 241-56.
- 173: Jacono BJ, Jacono JJ. Quick and easy stress-relief techniques. *Can Nurse*. 1997 Feb; 93(2): 49-50.
- 174: Jamal M, Baba VV. Job stress and burnout among Canadian managers and nurses: an empirical examination. *Can J Public Health*. 2000 Nov-Dec; 91(6): 454-8.
- 175: Jones E. Creating healthy work: stress in the nursing workplace. *Revolution*. 1997 Summer; 7(2): 56-8. No abstract available.
- 176: Jones MW, Andermann F. Temporal lobe epilepsy surgery: definition of candidacy. *Can J Neurol Sci*. 2000 May; 27 Suppl 1: S11-3; discussion S20-1. Review.

- 177: Julien D, Mergler D, Baldwin M, Sassine MP, Cormier N, Chartrand E, Belanger S. Beyond the workplace: an exploratory study of the impact of neurotoxic workplace exposure on marital relations. *Am J Ind Med.* 2000 Mar; 37(3): 316-23.
- 178: Juniper EF. Measuring health-related quality of life in rhinitis. *J Allergy Clin Immunol.* 1997 Feb; 99(2): S742-9. Review.
- 179: Kaasalainen S. Staff development and long-term care of patients with dementia. *J Gerontol Nurs.* 2002 Jul; 28(7): 39-46; quiz 54-5.
- 180: Kane D. Job sharing: a retention strategy for nurses. *Can J Nurs Leadersh.* 1999 Nov-Dec; 12(4): 16-22.
- 181: Kates N, Craven MA, Crustolo AM, Nikolaou L, Allen C, Farrar S. Sharing care: the psychiatrist in the family physician's office. *Can J Psychiatry.* 1997 Nov; 42(9): 960-5.
- 182: Katz J, Wowk A, Culp D, Wakeling H. Pain and tension are reduced among hospital nurses after on-site massage treatments: a pilot study. *J Perianesth Nurs.* 1999 Jun; 14(3): 128-33.
- 183: Kaufert PA. A health and social profile of the menopausal woman. *Exp Gerontol.* 1994 May-Aug; 29(3-4): 343-50.
- 184: Keddy B, Gregor F, Foster S, Denney D. Theorizing about nurses' work lives: the personal and professional aftermath of living with healthcare 'reform'. *Nurs Inq.* 1999 Mar; 6(1): 58-64.
- 185: Keenan SP, Ferguson KA, Chan-Yeung M, Fleetham JA. Prevalence of sleep disordered breathing in a population of Canadian grainworkers. *Can Respir J.* 1998 May-Jun; 5(3): 184-90.
- 186: Keith MM, Cann B, Brophy JT, Hellyer D, Day M, Egan S, Mayville K, Watterson A. Identifying and prioritizing gaming workers' health and safety concerns using mapping for data collection. *Am J Ind Med.* 2001 Jan; 39(1): 42-51.
- 187: Kelloway EK, Gottlieb BH, Barham L. The source, nature, and direction of work and family conflict: a longitudinal investigation. *J Occup Health Psychol.* 1999 Oct; 4(4): 337-46.
- 188: Kelloway EK, Gottlieb BH. The effect of alternative work arrangements on women's well-being: a demand-control model. *Womens Health.* 1998 Spring; 4(1): 1-18.
- 189: Kinzel A, Nanson J. Education and debriefing: strategies for preventing crises in crisis-line volunteers. *Crisis.* 2000; 21(3): 126-34. Review.
- 190: Kishchuk N, Peters C, Towers AM, Sylvestre M, Bourgault C, Richard L. Formative and effectiveness evaluation of a worksite program promoting healthy alcohol consumption. *Am J Health Promot.* 1994 May-Jun; 8(5): 353-62.
- 191: Kivisto J, Couture RT. Stress management for nurses: controlling the whirlwind. *Nurs Forum.* 1997 Jan-Mar; 32(1): 25-33. Review.
- 192: Klinger L, Spaulding SJ, Polatajko HJ, MacKinnon JR, Miller L. Chronic pain in the elderly: occupational adaptation as a means of coping with osteoarthritis of the hip and/or knee. *Clin J Pain.* 1999 Dec; 15(4): 275-83.
- 193: Knoop R. Relieving stress through value-rich work. *J Soc Psychol.* 1994 Dec; 134(6): 829-36.
- 194: Kojlak J, Keenan SP, Plotkin D, Giles-Fysh N, Sibbald WJ. Determining the potential need for a bereavement follow-up program: how well are family and health care workers' needs currently being met? *Off J Can Assoc Crit Care Nurs.* 1998 Spring; 9(1): 12-6.
- 195: Kraus RP, Nicholson IR. AIDS-related obsessive compulsive disorder: deconditioning based on fluoxetine-induced inhibition of anxiety. *J Behav Ther Exp Psychiatry.* 1996 Mar; 27(1): 51-6.

- 196: Kraut A, Mustard C, Walld R, Tate R. Unemployment and health care utilization. *Scand J Work Environ Health*. 2000 Apr; 26(2): 169-77.
- 197: Kumar S, Mital A. Margin of safety for the human back: a probable consensus based on published studies. *Ergonomics*. 1992 Jul-Aug; 35(7-8): 769-81. Review.
- 198: Kunz JL, Graham K. Drinking patterns, psychosocial characteristics and alcohol consequences. *Addiction*. 1998 Jul; 93(7): 1079-90.
- 199: Kushner KE, Harrison MJ. Employed mothers: stress and balance-focused coping. *Can J Nurs Res*. 2002 Jun; 34(1): 47-65.
- 200: Labreche FP, Cherry NM, McDonald JC. Psychiatric disorders and occupational exposure to solvents. *Br J Ind Med*. 1992 Dec; 49(12): 820-5.
- 201: Laflamme N, Brisson C, Moisan J, Milot A, Masse B, Vezina M. Job strain and ambulatory blood pressure among female white-collar workers. *Scand J Work Environ Health*. 1998 Oct; 24(5): 334-43.
- 202: Laforce R Jr, Gibson B, Morehouse R, Bailey PA, MacLaren VV. Neuropsychiatric profile of a case of post traumatic stress disorder following an electric shock. *Med J Malaysia*. 2000 Dec; 55(4): 524-6.
- 203: Laing MK. Letting the healing begin. *Am J Nurs*. 1994 Aug; 94(8): 48-50.
- 204: Larocque B, Brisson C, Blanchette C. [Internal consistency, factorial validity and discriminant validity of the French version of the psychological demands and decision latitude scales of the Karasek "Job Content Questionnaire"] *Rev Epidemiol Sante Publique*. 1998 Nov; 46(5): 371-81. French.
- 205: Larocque D. [Absenteeism] *Can Nurse*. 1996 Oct; 92(9): 42-6. French.
- 206: Laschinger HK, Finegan J, Shamian J, Wilk P. Impact of structural and psychological empowerment on job strain in nursing work settings: expanding Kanter's model. *J Nurs Adm*. 2001 May; 31(5): 260-72.
- 207: Laschinger HK, Finegan J, Shamian J, Almost J. Testing Karasek's Demands-Control Model in restructured healthcare settings: effects of job strain on staff nurses' quality of work life. *J Nurs Adm*. 2001 May; 31(5): 233-43.
- 208: Laschinger HK, Wong C, McMahon L, Kaufmann C. Leader behavior impact on staff nurse empowerment, job tension, and work effectiveness. *J Nurs Adm*. 1999 May; 29(5): 28-39.
- 209: Laschinger HK, Havens DS. The effect of workplace empowerment on staff nurses' occupational mental health and work effectiveness. *J Nurs Adm*. 1997 Jun; 27(6): 42-50.
- 210: Latimer EA. Economic impacts of supported employment for persons with severe mental illness. *Can J Psychiatry*. 2001 Aug; 46(6): 496-505. Review.
- 211: Laundry BR, Lees RE. Industrial accident experience of one company on 8- and 12-hour shift systems. *J Occup Med*. 1991 Aug; 33(8): 903-6.
- 212: Laurent C. [Taking care of the caregiver and the patient] *Infirm Que*. 1998 Sep-Oct; 6(1): 31-4. French. No abstract available.
- 213: LeBlanc MM, Kelloway EK. Predictors and outcomes of workplace violence and aggression. *J Appl Psychol*. 2002 Jun; 87(3): 444-53.
- 214: Lee RT, Ashforth BE. A meta-analytic examination of the correlates of the three dimensions of job burnout. *J Appl Psychol*. 1996 Apr; 81(2): 123-33.
- 215: Legault E, Rebeiro KL. Occupation as means to mental health: a single-case study. *Am J Occup Ther*. 2001 Jan-Feb; 55(1): 90-6. No abstract available.

- 216: Leigh G, Hodgins DC, Milne R, Gerrish R. Volunteer assistance in the treatment of chronic alcoholism. *Am J Drug Alcohol Abuse*. 1999 Aug; 25(3): 543-59.
- 217: Leiter MP, Maslach C. Six areas of worklife: a model of the organizational context of burnout. *J Health Hum Serv Adm*. 1999 Spring; 21(4): 472-89.
- 218: Leiter MP, Harvie P, Frizzell C. The correspondence of patient satisfaction and nurse burnout. *Soc Sci Med*. 1998 Nov; 47(10): 1611-7.
- 219: Leiter MP, Harvie P. Correspondence of supervisor and subordinate perspectives during major organizational change. *J Occup Health Psychol*. 1997 Oct; 2(4): 343-52.
- 220: Leiter MP, Robichaud L. Relationships of occupational hazards with burnout: an assessment of measures and models. *J Occup Health Psychol*. 1997 Jan; 2(1): 35-44.
- 221: Leiter MP, Harvie PL. Burnout among mental health workers: a review and a research agenda. *Int J Soc Psychiatry*. 1996 Summer; 42(2): 90-101. Review.
- 222: Lepage D. [Temporary incapacity and emotional problems] *CMAJ*. 1991 Nov 15; 145(10): 1241-6. Review. French.
- 223: Leznoff A, Binkley KE. Idiopathic environmental intolerances: results of challenge studies. *Occup Med*. 2000 Jul-Sep; 15(3): 529-37. Review.
- 224: Lippel K. Therapeutic and anti-therapeutic consequences of workers' compensation. *Int J Law Psychiatry*. 1999 Sep-Dec; 22(5-6): 521-46. No abstract available.
- 225: Lippel K. Workers' compensation and stress. Gender and access to compensation. *Int J Law Psychiatry*. 1999 Jan-Feb; 22(1): 79-89. No abstract available.
- 226: Lloyd S, Streiner D, Shannon S. Burnout, depression, life and job satisfaction among Canadian emergency physicians. *J Emerg Med*. 1994 Jul-Aug; 12(4): 559-65.
- 227: Locker D. Work stress, job satisfaction and emotional well-being among Canadian dental assistants. *Community Dent Oral Epidemiol*. 1996 Apr; 24(2): 133-7.
- 228: Loo R. Policies and procedures in the workplace: how health care organizations compare. *Healthc Manage Forum*. 1993 Summer; 6(2): 39-43.
- 229: Luescher UA. Animal behavior case of the month. A breakdown in working performance, or burnout, was observed in a dog used in searches for explosives. *J Am Vet Med Assoc*. 1993 Dec 1; 203(11): 1538-9. No abstract available.
- 230: Lusk C. Geriatric mental health education in Canada SKIPs into the 21st century. *J Gerontol Nurs*. 1999 May; 25(5): 37-42.
- 231: MacDonald G. Patterns of renewal in mothers who are nurses. *Can Nurse*. 1998 Jan; 94(1): 24-8. No abstract available.
- 232: MacDonald NE, Davidson S. The wellness program for medical faculty at the University of Ottawa: a work in progress. *CMAJ*. 2000 Sep 19; 163(6): 735-8. No abstract available.
- 233: Macdonald S, Wells S, Wild TC. Occupational risk factors associated with alcohol and drug problems. *Am J Drug Alcohol Abuse*. 1999 May; 25(2): 351-69.
- 234: MacKinnon JR, Avison WR, McCain GA. Pain and functional limitations in individuals with rheumatoid arthritis. *Int J Rehabil Res*. 1994 Mar; 17(1): 49-59.

- 235: Malla AK, Norman RM, Scholten DJ, Zirul S, Kotteda V. A comparison of long-term outcome in first-episode schizophrenia following treatment with risperidone or a typical antipsychotic. *J Clin Psychiatry*. 2001 Mar; 62(3): 179-84.
- 236: Malla AK, Norman RM, Scholten D. Predictors of service use and social conditions in patients with psychotic disorders. *Can J Psychiatry*. 2000 Apr; 45(3): 269-73.
- 237: Markle-Reid M, Browne G, Roberts J, Gafni A, Byrne C. The 2-year costs and effects of a public health nursing case management intervention on mood-disordered single parents on social assistance. *J Eval Clin Pract*. 2002 Feb; 8(1): 45-59.
- 238: Marriott A, Sexton L, Staley D. Components of job satisfaction in psychiatric social workers. *Health Soc Work*. 1994 Aug; 19(3): 199-205.
- 239: Martin GL. A staff manual to help developmentally disabled persons improve their work habits and productivity. *Behav Modif*. 1995 Jul; 19(3): 325-38.
- 240: Mason RA, Boutilier MA. Unemployment as an issue for public health: preliminary findings from North York. *Can J Public Health*. 1995 May-Jun; 86(3): 152-4.
- 241: Maurier WL, Northcott HC. Job uncertainty and health status for nurses during restructuring of health care in Alberta. *West J Nurs Res*. 2000 Aug; 22(5): 623-41.
- 242: May KA. Impact of prescribed activity restriction during pregnancy on women and families. *Health Care Women Int*. 2001 Jan-Feb; 22(1-2): 29-47.
- 243: McAiney CA. The development of the empowered aide model. An intervention for long-term care staff who care for Alzheimer's residents. *J Gerontol Nurs*. 1998 Jan; 24(1): 17-22; quiz 60. No abstract available.
- 244: McCall M, Salama P. Selection, training, and support of relief workers: an occupational health issue. *BMJ*. 1999 Jan 9; 318(7176): 113-6. Review. No abstract available.
- 245: McCallum M, Piper WE, O'Kelly J. Predicting patient benefit from a group-oriented, evening treatment program. *Int J Group Psychother*. 1997 Jul; 47(3): 291-314.
- 246: McColl MA. Occupation in stressful times. *Am J Occup Ther*. 2002 May-Jun; 56(3): 350-3. No abstract available.
- 247: McDonald C. Shiftwork and CNE: a commentary. *Concern*. 1998 Nov; 27(5): 22-3. No abstract available.
- 248: McDonald JC, Armstrong B, Benard J, Cherry NM, Farant JP. Sick building syndrome in a Canadian office complex. *Arch Environ Health*. 1993 Sep-Oct; 48(5): 298-304.
- 249: McDonough P, Walters V, Strohschein L. Chronic stress and the social patterning of women's health in Canada. *Soc Sci Med*. 2002 Mar; 54(5): 767-82.
- 250: McDonough P. Job insecurity and health. *Int J Health Serv*. 2000; 30(3): 453-76.
- 251: McDowell I. Alzheimer's disease: insights from epidemiology. *Aging (Milano)*. 2001 Jun; 13(3): 143-62. Review.
- 252: McIntyre JW. Anaesthesia monitoring: the human factors component of technology transfer. *Int J Clin Monit Comput*. 1993 Feb; 10(1): 23-9.
- 253: McKee MD, Yoo D, Schemitsch EH. Health status after Ilizarov reconstruction of post-traumatic lower-limb deformity. *J Bone Joint Surg Br*. 1998 Mar; 80(2): 360-4.
- 254: Messing K, Seifert AM, Escalona E. The 120-S minute: using analysis of work activity to prevent psychological distress among elementary school teachers. *J Occup Health Psychol*. 1997 Jan; 2(1): 45-62.

- 255: Messing K, Saurel-Cubizolles MJ, Bourguine M, Kaminski M. Menstrual-cycle characteristics and work conditions of workers in poultry slaughterhouses and canneries. *Scand J Work Environ Health*. 1992 Oct; 18(5): 302-9.
- 256: Messing K. Introduction: research directed to improving women's occupational health. *Women Health*. 1992; 18(3): 1-9. Review.
- 257: Middleton JI, Stewart NJ, Richardson JS. Caregiver distress. Related to disruptive behaviors on special care units versus traditional long-term care units. *J Gerontol Nurs*. 1999 Mar; 25(3): 11-9.
- 258: Mignone J, Guidotti TL. Support groups for injured workers: process and outcomes. *J Occup Environ Med*. 1999 Dec; 41(12): 1059-64.
- 259: Minnes P, Harrick L, Carlson P, Johnston J. A transitional living environment for persons with brain injuries: staff and client perceptions. *Brain Inj*. 1998 Nov; 12(11): 987-92.
- 260: Mishara BL, Daigle MS. Effects of different telephone intervention styles with suicidal callers at two suicide prevention centers: an empirical investigation. *Am J Community Psychol*. 1997 Dec; 25(6): 861-85.
- 261: Mishara BL, Giroux G. The relationship between coping strategies and perceived stress in telephone intervention volunteers at a suicide prevention center. *Suicide Life Threat Behav*. 1993 Fall; 23(3): 221-9.
- 262: Moore L, Meyer F, Perusse M, Cantin B, Dagenais GR, Bairati I, Savard J. Psychological stress and incidence of ischaemic heart disease. *Int J Epidemiol*. 1999 Aug; 28(4): 652-8.
- 263: Morgan DG, Semchuk KM, Stewart NJ, D'Arcy C. Job strain among staff of rural nursing homes. A comparison of nurses, aides, and activity workers. *J Nurs Adm*. 2002 Mar; 32(3): 152-61.
- 264: Moszczynski AB, Haney CJ. Stress and coping of Canadian rural nurses caring for trauma patients who are transferred out. *J Emerg Nurs*. 2002 Dec; 28(6): 496-504.
- 265: Mulder J, Gregory D. Transforming experience into wisdom: healing amidst suffering. *J Palliat Care*. 2000 Summer; 16(2): 25-9. No abstract available.
- 266: Murnaghan ML, Buckley RE. Lost but not forgotten: patients lost to follow-up in a trauma database. *Can J Surg*. 2002 Jun; 45(3): 191-5.
- 267: Murray M, McMillan C. Problem drinking in Northern Ireland: results of a community survey using the CAGE questionnaire. *Alcohol Alcohol*. 1993 Jul; 28(4): 477-83.
- 268: Nilsson T, Nelson TM, Carlson D. Development of fatigue symptoms during simulated driving. *Accid Anal Prev*. 1997 Jul; 29(4): 479-88.
- 269: Nisker JA. The yellow brick road of medical education. *CMAJ*. 1997 Mar 1; 156(5): 689-91.
- 270: Noh S, Wu Z, Speechley M, Kaspar V. Depression in Korean immigrants in Canada. II. Correlates of gender, work, and marriage. *J Nerv Ment Dis*. 1992 Sep; 180(9): 578-82.
- 271: Novak M, Chappell NL. The impact of cognitively impaired patients and shift on nursing assistant stress. *Int J Aging Hum Dev*. 1996; 43(3): 235-48.
- 272: Novak M, Chappell NL. Nursing assistant burnout and the cognitively impaired elderly. *Int J Aging Hum Dev*. 1994; 39(2): 105-20.
- 273: O'Brien P, Dyck I, Caron S, Mortenson P. Environmental analysis: insights from sociological and geographical perspectives. *Can J Occup Ther*. 2002 Oct; 69(4): 229-38.
- 274: O'Hara PL. Employee assistance plans in Canada. *Empl Benefits J*. 1995 Sep; 20(3): 23-6.

- 275: Oberle K, Hughes D. Doctors' and nurses' perceptions of ethical problems in end-of-life decisions. *J Adv Nurs*. 2001 Mar; 33(6): 707-15.
- 276: Ogborne AC, Braun K, Schmidt G. Working in addictions treatment services: some views of a sample of service providers in Ontario. *Subst Use Misuse*. 1998 Oct; 33(12): 2425-40.
- 277: Ogborne AC, Smart RG. People with physical disabilities admitted to a residential addiction treatment program. *Am J Drug Alcohol Abuse*. 1995 Feb; 21(1): 137-45.
- 278: Ogloff JR, Tien G, Roesch R, Eaves D. A model for the provision of jail mental health services: an integrative, community-based approach. *J Ment Health Adm*. 1991 Fall; 18(3): 209-22.
- 279: Ohayon MM, Guilleminault C, Priest RG. Night terrors, sleepwalking, and confusional arousals in the general population: their frequency and relationship to other sleep and mental disorders. *J Clin Psychiatry*. 1999 Apr; 60(4): 268-76; quiz 277.
- 280: Oldridge N, Guyatt G, Jones N, Crowe J, Singer J, Feeny D, McKelvie R, Runions J, Streiner D, Torrance G. Effects on quality of life with comprehensive rehabilitation after acute myocardial infarction. *Am J Cardiol*. 1991 May 15; 67(13): 1084-9.
- 281: Ostry AS, Marion SA, Demers PA, Hershler R, Kelly S, Teschke K, Hertzman C. Measuring psychosocial job strain with the job content questionnaire using experienced job evaluators. *Am J Ind Med*. 2001 Apr; 39(4): 397-401.
- 282: Ostry AS, Marion SA, Demers PA, Hershler R, Kelly S, Teschke K, Mustard C, Hertzman C. Comparison of expert-rater methods for assessing psychosocial job strain. *Scand J Work Environ Health*. 2001 Feb; 27(1): 70-5.
- 283: Ozanne WG. Creutzfeldt-Jacob disease decontamination of tissues and contaminated materials. *Can J Med Technol*. 1994; 56(1): 35-8. Review.
- 284: Pace A, Carron AV. Travel and the home advantage. *Can J Sport Sci*. 1992 Mar; 17(1): 60-4.
- 285: Page EP. Tapping the potential in resistance. *Semin Nurse Manag*. 2002 Sep; 10(3): 180-8.
- 286: Palepu A, Herbert CP. Medical women in academia: the silences we keep. *CMAJ*. 2002 Oct 15; 167(8): 877-9. No abstract available.
- 287: Patrick L, Knoefel F, Gaskowski P, Rexroth D. Medical comorbidity and rehabilitation efficiency in geriatric inpatients. *J Am Geriatr Soc*. 2001 Nov; 49(11): 1471-7.
- 288: Patten SB, Metz LM. Interferon beta-1 a and depression in relapsing-remitting multiple sclerosis: an analysis of depression data from the PRISMS clinical trial. *Mult Scler*. 2001 Aug; 7(4): 243-8.
- 289: Patton D, Barnes GE, Murray RP. The reliability and construct validity of two measures of addictive personality. *Int J Addict*. 1994 Jun; 29(8): 999-1014.
- 290: Pesut B. Lighting the lamp. *J Christ Nurs*. 2000 Spring; 17(2): 4-6. No abstract available.
- 291: Peternelj-Taylor CA, Johnson RL. Serving time: psychiatric mental health nursing in corrections. *J Psychosoc Nurs Ment Health Serv*. 1995 Aug; 33(8): 12-9. Review.
- 292: Phipps L. Psychiatric evaluation and outcomes in candidates for heart transplantation. *Clin Invest Med*. 1997 Dec; 20(6): 388-95.
- 293: Pickett W, King WD, Lees RE, Bienefeld M, Morrison HI, Brison RJ. Suicide mortality and pesticide use among Canadian farmers. *Am J Ind Med*. 1998 Oct; 34(4): 364-72.
- 294: Piper WE, Ogradniczuk JS, Joyce AS, McCallum M, Rosie JS. Relationships among affect, work, and outcome in group therapy for patients with complicated grief. *Am J Psychother*. 2002; 56(3): 347-61.

- 295: Polimeni-Walker I, Wilson KG, Jewers R. Reasons for participating in occupational therapy groups: perceptions of adult psychiatric inpatients and occupational therapists. *Can J Occup Ther.* 1992 Dec; 59(5): 240-7.
- 296: Provencher HL, Gregg R, Mead S, Mueser KT. The role of work in the recovery of persons with psychiatric disabilities. *Psychiatr Rehabil J.* 2002 Fall; 26(2): 132-44.
- 297: Ratner PA. The incidence of wife abuse and mental health status in abused wives in Edmonton, Alberta. *Can J Public Health.* 1993 Jul-Aug; 84(4): 246-9.
- 298: Rebeiro KL, Cook JV. Opportunity, not prescription: an exploratory study of the experience of occupational engagement. *Can J Occup Ther.* 1999 Oct; 66(4): 176-87.
- 299: Regehr C, Goldberg G, Glancy GD, Knott T. Posttraumatic symptoms and disability in paramedics. *Can J Psychiatry.* 2002 Dec; 47(10): 953-8.
- 300: Regehr C, Hemsworth D, Hill J. Individual predictors of posttraumatic distress: a structural equation model. *Can J Psychiatry.* 2001 Mar; 46(2): 156-61.
- 301: Regehr C, Hill J, Glancy GD. Individual predictors of traumatic reactions in firefighters. *J Nerv Ment Dis.* 2000 Jun; 188(6): 333-9.
- 302: Regehr C, Regehr G, Bradford J. A model for predicting depression in victims of rape. *J Am Acad Psychiatry Law.* 1998; 26(4): 595-605.
- 303: Regehr C, Glancy G. Sexual exploitation of patients: issues for colleagues. *Am J Orthopsychiatry.* 1995 Apr; 65(2): 194-202. Review.
- 304: Reutter LI, Ford JS. Perceptions of public health nursing: views from the field. *J Adv Nurs.* 1996 Jul; 24(1): 7-15.
- 305: Richardsen AM, Burke RJ. Occupational stress and job satisfaction among physicians: sex differences. *Soc Sci Med.* 1991; 33(10): 1179-87.
- 306: Rodgers CD, Paterson DH, Cunningham DA, Noble EG, Pettigrew FP, Myles WS, Taylor AW. Sleep deprivation: effects on work capacity, self-paced walking, contractile properties and perceived exertion. *Sleep.* 1995 Jan; 18(1): 30-8.
- 307: Rogers HL, Reilly SM. Health problems associated with international business travel. A critical review of the literature. *AAOHN J.* 2000 Aug; 48(8): 376-84. Review.
- 308: Rogers JM, Freeman SJ, LeSage P. The occupational stress of judges. *Can J Psychiatry.* 1991 Jun; 36(5): 317-22.
- 309: Rogers KA, Kelloway EK. Violence at work: personal and organizational outcomes. *J Occup Health Psychol.* 1997 Jan; 2(1): 63-71.
- 310: Rondeau KV. Sexual harassment: guidelines for laboratory managers. *Clin Lab Manage Rev.* 1992 May-Jun; 6(3): 215-20.
- 311: Rook M, Shulman KI. Revolutionary versus evolutionary change: the experience of a university hospital department of psychiatry. *Healthc Manage Forum.* 1996 Winter; 9(4): 53-5.
- 312: Ross HE. Benzodiazepine use and anxiolytic abuse and dependence in treated alcoholics. *Addiction.* 1993 Feb; 88(2): 209-18.
- 313: Roth D, Antony MM, Kerr KL, Downie F. Attitudes toward mental illness in medical students: does personal and professional experience with mental illness make a difference? *Med Educ.* 2000 Mar; 34(3): 234-6.

- 314: Rousseau A, de Man AF. Authoritarian and socially restrictive attitudes toward mental patients in mental health volunteers and nonvolunteers. *Psychol Rep.* 1998 Dec; 83(3 Pt 1): 803-6.
- 315: Russell GM, Roach SM. Occupational stress: a survey of management in general practice. *Med J Aust.* 2002 Apr 15; 176(8): 367-70.
- 316: Sale JE, Kerr MS. The psychometric properties of Karasek's demand and control scales within a single sector: data from a large teaching hospital. *Int Arch Occup Environ Health.* 2002 Mar; 75(3): 145-52.
- 317: Sanford M, Offord D, McLeod K, Boyle M, Byrne C, Hall B. Pathways into the work force: antecedents of school and work force status. *J Am Acad Child Adolesc Psychiatry.* 1994 Sep; 33(7): 1036-46.
- 318: Sassine MP, Mergler D, Larribe F, Belanger S. [Mental health deterioration in workers exposed to styrene] *Rev Epidemiol Sante Publique.* 1996 Jan; 44(1): 14-24. French.
- 319: Schechter J, Green LW, Olsen L, Kruse K, Cargo M. Application of Karasek's demand/control model a Canadian occupational setting including shift workers during a period of reorganization and downsizing. *Am J Health Promot.* 1997 Jul-Aug; 11(6): 394-9.
- 320: Schell BH, DeLuca VM. Task-achievement, obsessive-compulsive, type A traits, and job satisfaction of professionals in public practice accounting. *Psychol Rep.* 1991 Oct; 69(2): 611-30.
- 321: Seifert AM, Messing K, Dumais L. Star wars and strategic defense initiatives: work activity and health symptoms of unionized bank tellers during work reorganization. *Int J Health Serv.* 1997; 27(3): 455-77.
- 322: Sewitch MJ, Rossignol M, Bellavance F, Leclaire R, Esdaile JM, Suissa S, Proulx R, Dupuis M. First lifetime back pain and psychiatry treatment: psychological factors and recovery in compensated workers. *AAOHN J.* 2000 May; 48(5): 234-42.
- 323: Shain M. The role of the workplace in the production and containment of health costs: the case of stress-related disorders. *Int J Health Care Qual Assur Inc Leadersh Health Serv.* 1999; 12(2-3): i-vii.
- 324: Shamian J. Re-energizing hospital care. On the heels of Florence Nightingale. *Reflect Nurs Leadersh.* 2000; 26(1): 24-6. No abstract available.
- 325: Shamian J, Villeneuve M. Building a national nursing agenda. A timely response for the sickest workers in the country. *Hosp Q.* 2000 Fall; 4(1): 16, 18. No abstract available.
- 326: Shannon HS, Woodward CA, Cunningham CE, McIntosh J, Lendrum B, Brown J, Rosenbloom D. Changes in general health and musculoskeletal outcomes in the workforce of a hospital undergoing rapid change: a longitudinal study. *J Occup Health Psychol.* 2001 Jan; 6(1): 3-14.
- 327: Shannon HS, Hope L, Griffith L, Stieb D. Fatal occupational accidents in Ontario, 1986-1989. *Am J Ind Med.* 1993 Feb; 23(2): 253-64.
- 328: Shields M. Long working hours and health. *Health Rep.* 1999 Autumn; 11(2): 33-48(Eng); 37-55(Fre). English, French.
- 329: Sinclair DE, McLeod RB. The assessment of the intoxicated patient: medical-legal issues. *Health Law Can.* 1994; 15(2): 32-4. No abstract available.
- 330: Skelton-Green J. Leadership crisis in psychiatric services: a change theory perspective. *Psychiatr Q.* 1997 Spring; 68(1): 43-65.
- 331: Smart RG, Mann RE, Adrian M. Health and productivity savings from increased alcoholism treatment in Ontario. *Can J Public Health.* 1993 Jan-Feb; 84(1): 62-3. No abstract available.
- 332: Smith D, Tziner A. Moderating effects of affective disposition and social support on the relationship between person-environment fit and strain. *Psychol Rep.* 1998 Jun; 82(3 Pt 1): 963-83.

- 333: Smylie JA, Calvert BL, Gerber GJ. Program evaluation as a measure of the quality of a new approach to community psychiatric care. *Qual Assur Health Care*. 1991; 3(4): 247-55.
- 334: Stewart MJ, Arklie M. Work satisfaction, stressors and support experienced by community health nurses. *Can J Public Health*. 1994 May-Jun; 85(3): 180-4.
- 335: Stringer B. Pinpointing the causes of nurses' stress. *Can Nurse*. 2001 Apr; 97(4): 32-4. No abstract available.
- 336: Suedfeld P. Applying positive psychology in the study of extreme environments. *Hum Perf Extrem Environ*. 2001 Dec; 6(1): 21-5.
- 337: Suedfeld P, Steel GD. The environmental psychology of capsule habitats. *Annu Rev Psychol*. 2000; 51: 227-53. Review.
- 338: Suissa S, Dennis R, Ernst P, Sheehy O, Wood-Dauphinee S. Effectiveness of the leukotriene receptor antagonist zafirlukast for mild-to-moderate asthma. A randomized, double-blind, placebo-controlled trial. *Ann Intern Med*. 1997 Feb 1; 126(3): 177-83.
- 339: Sullivan T, Adler S. Work, stress, and disability. *Int J Law Psychiatry*. 1999 Sep-Dec; 22(5-6): 417-24. Review. No abstract available.
- 340: Sullivan T, Kerr M, Ibrahim S. Job stress in healthcare workers: highlights from the National Population Health Survey. *Hosp Q*. 1999 Summer; 2(4): 34-40. No abstract available.
- 341: Swenson JR, Abbey S, Stewart DE. Consultation-liaison psychiatry as a subspecialty. A Canadian survey. *Gen Hosp Psychiatry*. 1993 Nov; 15(6): 386-91.
- 342: Taylor S, Kuch K, Koch WJ, Crockett DJ, Passey G. The structure of posttraumatic stress symptoms. *J Abnorm Psychol*. 1998 Feb; 107(1): 154-60.
- 343: Teasell RW, McRae MP, Finestone HM. Social issues in the rehabilitation of younger stroke patients. *Arch Phys Med Rehabil*. 2000 Feb; 81(2): 205-9.
- 344: Tett RP, Bobocel DR, Hafer C, Lees MC, Smith CA, Jackson DN. The dimensionality of Type A behavior within a stressful work simulation. *J Pers*. 1992 Sep; 60(3): 533-51.
- 345: Thommasen HV, Connelly I, Lavanchy M, Berkowitz J, Grzybowski S. Short report: burnout, depression, and moving away. How are they related? *Can Fam Physician*. 2001 Apr; 47: 747-9. No abstract available.
- 346: Thommasen HV, Lavanchy M, Connelly I, Berkowitz J, Grzybowski S. Mental health, job satisfaction, and intention to relocate. Opinions of physicians in rural British Columbia. *Can Fam Physician*. 2001 Apr; 47: 737-44.
- 347: Thurston NE, Tanguay SM, Fraser KL. Health & safety. Sleep and shiftwork. II. *Can Nurse*. 2000 Nov; 96(10): 31-2. No abstract available.
- 348: Thurston NE, Tanguay SM, Fraser KL. Sleep and shiftwork. I. *Can Nurse*. 2000 Oct; 96(9): 35-6. No abstract available.
- 349: Tipliski VM. The characteristics of recovering chemically-dependent Manitoba nurses. *Int J Addict*. 1993 Jun; 28(8): 711-7.
- 350: Townsend EA. Institutional ethnography: explicating the social organization of professional health practices intending client empowerment. *Can J Public Health*. 1992 Mar-Apr; 83 Suppl 1: S58-61.
- 351: Tully S. Caring for the caregiver. Perspectives. 1997 Summer; 21(2): 5-8. Review. No abstract available.
- 352: Tyson PD, Pongruengphant R. Avoidance as a coping strategy for nurses in Thailand. *Psychol Rep*. 1996 Oct; 79(2): 592-4.

- 353: Vachon ML. Staff stress in hospice/palliative care: a review. *Palliat Med.* 1995 Apr; 9(2): 91-122. Review.
- 354: van der Wal R, Bouthillette F, Havlovic SJ. Recommendations for managing hospital closure. *Healthc Manage Forum.* 1998 Winter; 11(4): 12-24. English, French.
- 355: van Netten C. Multi-elemental analysis of jet engine lubricating oils and hydraulic fluids and their implication in aircraft air quality incidents. *Sci Total Environ.* 1999 May 7; 229(1-2): 125-9.
- 356: Vedantham K, Brunet A, Boyer R, Weiss DS, Metzler TJ, Marmar CR. Posttraumatic stress disorder, trauma exposure, and the current health of Canadian bus drivers. *Can J Psychiatry.* 2001 Mar; 46(2): 149-55.
- 357: Venter A, Lord C, Schopler E. A follow-up study of high-functioning autistic children. *J Child Psychol Psychiatry.* 1992 Mar; 33(3): 489-507.
- 358: Vermeulen M, Mustard C. Gender differences in job strain, social support at work, and psychological distress. *J Occup Health Psychol.* 2000 Oct; 5(4): 428-40.
- 359: Vezina M, Gingras S. [Work and mental health: risk groups] *Can J Public Health.* 1996 Mar-Apr; 87(2): 135-40. French.
- 360: Vezina M. [Mental health at the work place: for an understanding of this stake in public health] *Sante Ment Que.* 1996 Autumn; 21(2): 117-38. French.
- 361: Wall R, Rehm J, Fischer B, Brands B, Gliksman L, Stewart J, Medved W, Blake J. Social costs of untreated opioid dependence. *J Urban Health.* 2000 Dec; 77(4): 688-722.
- 362: Walters V, McDonough P, Strohschein L. The influence of work, household structure, and social, personal and material resources on gender differences in health: an analysis of the 1994 Canadian National Population Health Survey. *Soc Sci Med.* 2002 Mar; 54(5): 677-92.
- 363: Walters V, Lenton R, French S, Eyles J, Mayr J, Newbold B. Paid work, unpaid work and social support: a study of the health of male and female nurses. *Soc Sci Med.* 1996 Dec; 43(11): 1627-36.
- 364: Wang J, Patten SB. Perceived work stress and major depression in the Canadian employed population, 20-49 years old. *J Occup Health Psychol.* 2001 Oct; 6(4): 283-9.
- 365: Wang J, Patten SB. Alcohol consumption and major depression: findings from a follow-up study. *Can J Psychiatry.* 2001 Sep; 46(7): 632-8.
- 366: Wiebe J, Vinje G, Sawka E. Alcohol and drug use in the workplace: a survey of Alberta workers. *Am J Health Promot.* 1995 Jan-Feb; 9(3): 179-81, 187. No abstract available.
- 367: Wiele K. Surviving workplace stress. *Leadersh Health Serv.* 1994 May-Jun; 3(3): 16-7. No abstract available.
- 368: Wilkins K, Beaudet MP. Work stress and health. *Health Rep.* 1998 Winter; 10(3): 47-62 (ENG); 49-66 (FRE). English, French.
- 369: Williams-Keeler L, Milliken H, Jones B. Psychosis as precipitating trauma for PTSD: a treatment strategy. *Am J Orthopsychiatry.* 1994 Jul; 64(3): 493-8.
- 370: Willmer J, Mohr E. Evaluation of selection criteria used in Alzheimer's disease clinical trials. *Can J Neurol Sci.* 1998 Feb; 25(1): 39-43.
- 371: Wishart L, Macerollo J, Loney P, King A, Beaumont L, Browne G, Roberts J. "Special steps": an effective visiting/walking program for persons with cognitive impairment. *Can J Nurs Res.* 2000 Mar; 31(4): 57-71.
- 372: Woodcox V, Isaacs S, Underwood J, Chambers LW. Public health nurses' quality of worklife: responses to organizational changes. *Can J Public Health.* 1994 May-Jun; 85(3): 185-7.

- 373: Woodward CA, Shannon HS, Lendrum B, Brown J, McIntosh J, Cunningham C. Predictors of job stress and satisfaction among hospital workers during re-engineering: differences by extent of supervisory responsibilities. *Health Manage Forum*. 2000 Spring; 13(1): 29-35.
- 374: Woodward CA, Shannon HS, Cunningham C, McIntosh J, Lendrum B, Rosenbloom D, Brown J. The impact of re-engineering and other cost reduction strategies on the staff of a large teaching hospital: a longitudinal study. *Med Care*. 1999 Jun; 37(6): 556-69.
- 375: Xie X, Rehrn J, Single E, Robson L, Paul J. The economic costs of illicit drug use in Ontario, 1992. *Health Econ*. 1998 Feb; 7(1): 81-5.
- 376: Yonge O, Krahn H, Trojan L, Reid D, Haase M. Supporting preceptors. *J Nurses Staff Dev*. 2002 Mar-Apr; 18(2): 73-7; quiz 78-9.
- 377: Yonge O, Myrick F, Haase M. Student nurse stress in the preceptorship experience. *Nurse Educ*. 2002 Mar-Apr; 27(2): 84-8.
- 378: Young A. W. H. R. Rivers and the war neuroses. *J Hist Behav Sci*. 1999 Fall; 35(4): 359-78.
- 379: Zaza C, Farewell VT. Musicians' playing-related musculoskeletal disorders: an examination of risk factors. *Am J Ind Med*. 1997 Sep; 32(3): 292-300.
- 380: Zeitlin SB, McNally RJ. Implicit and explicit memory bias for threat in post-traumatic stress disorder. *Behav Res Ther*. 1991; 29(5): 451-7.
- 381: Zimmerman G, Weber W. Care for the Caregivers: a program for Canadian military chaplains after serving in NATO and United Nations peacekeeping missions in the 1990s. *Mil Med*. 2000 Sep; 165(9): 687-90.